

Product datasheet for **TA309776**

NTH1 (NTHL1) Rabbit Polyclonal Antibody

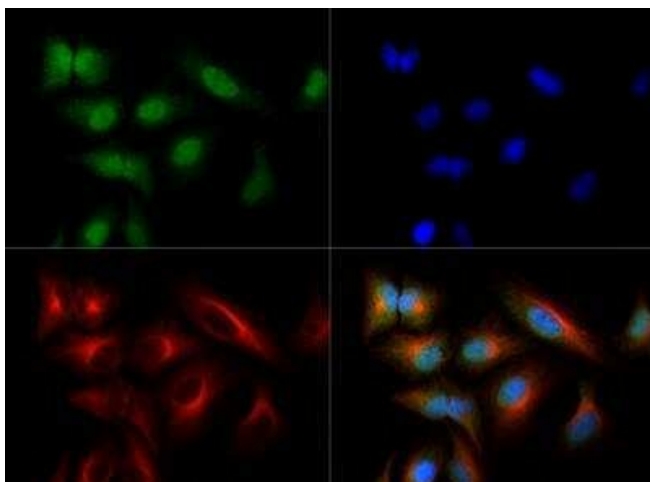
Product data:

Product Type:	Primary Antibodies
Applications:	ICC/IF, WB
Recommended Dilution:	Immunocytochemistry/ Immunofluorescence: 1:500, Western Blot: 1:1000-1:5000
Reactivity:	Human
Host:	Rabbit
Clonality:	Polyclonal
Immunogen:	Full-length recombinant protein.
Formulation:	0.1% Sodium Azide
Purification:	Whole antisera
Conjugation:	Unconjugated
Storage:	Store at -20°C as received.
Stability:	Stable for 12 months from date of receipt.
Gene Name:	nth-like DNA glycosylase 1
Database Link:	NP_002519 Entrez Gene 4913 Human P78549
Synonyms:	hNTH1; NTH1; OCTS3
Protein Families:	Druggable Genome, Stem cell - Pluripotency
Protein Pathways:	Base excision repair

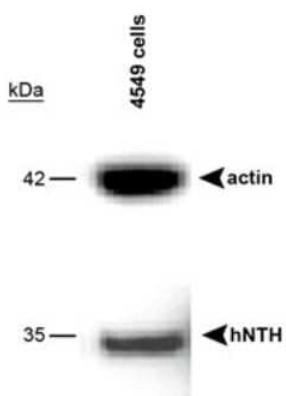


[View online »](#)

Product images:



Immunocytochemistry/Immunofluorescence: NTH1 Antibody TA309776 - The NTH1 antibody was tested in HeLa cells at a 1:500 dilution against Dylight 488 (Green). Alpha-tubulin and nuclei were counterstained against Dylight 550 (Red) and DAPI (Blue).



Western Blot: NTH1 Antibody TA309776 - Analysis of A549 cells using TA309776. A band is seen at 35 kDa representing NTH1.