

Product datasheet for **TA309774**

Nurr1 (NR4A2) Rabbit Polyclonal Antibody

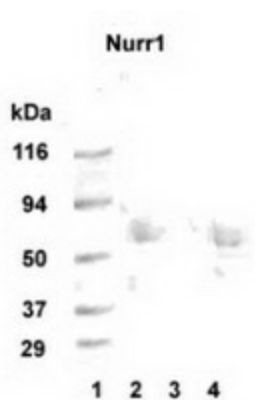
Product data:

Product Type:	Primary Antibodies
Applications:	IHC, WB
Recommended Dilution:	WB, IHC
Reactivity:	Human, Rat
Host:	Rabbit
Isotype:	IgG
Clonality:	Polyclonal
Immunogen:	Synthetic peptide comprising residues 513-526 [TERHGLKEPKRVEE] of the human Nurr1 protein. Based on 100% sequence homology, this antibody is also expected to cross react with rat and mouse Nurr1.
Formulation:	PBS and 0.02% Sodium Azide
Concentration:	lot specific
Purification:	Immunogen affinity purified
Conjugation:	Unconjugated
Storage:	Store at -20°C as received.
Stability:	Stable for 12 months from date of receipt.
Gene Name:	nuclear receptor subfamily 4 group A member 2
Database Link:	NP_006177 Entrez Gene 54278 Rat Entrez Gene 4929 Human P43354
Synonyms:	HZF-3; NOT; NURR1; RNR1; TINUR
Protein Families:	Druggable Genome, Nuclear Hormone Receptor, Transcription Factors

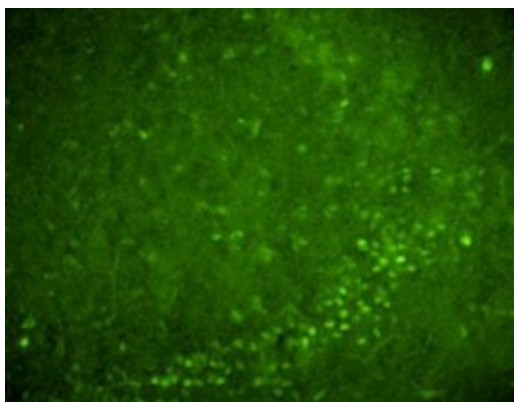


[View online »](#)

Product images:



Western Blot: Nurr1 Antibody - Western blot detection of Nurr1 in 20 ug of human hippocampus tissue lysate (lanes 2 and 4) with Nurr1 polyclonal at 1:1000 dilution followed by AP-conjugated secondary at 1:5000 dilution. MW marker lane 1. Peptide absorption control lane 3.



Nurr1 staining with Nurr1 polyclonal antibody at a 1:100 dilution in adult rat brain hippocampus. Tissue was fixed in paraformaldehyde and cut into 20 micron sections.