

## Product datasheet for **TA309772**

### **NPFFR2 Rabbit Polyclonal Antibody**

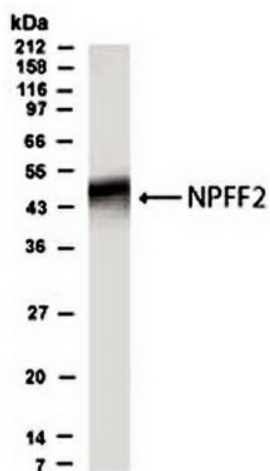
#### **Product data:**

Product Type:	Primary Antibodies
Applications:	WB
Recommended Dilution:	WB
Reactivity:	Human
Host:	Rabbit
Clonality:	Polyclonal
Immunogen:	N terminal sequence MNEKWDTNSENWHPI and the C terminal sequence ELVMEELKETTNSSEI of the human NPFF2 protein.
Formulation:	100 ug in 100 ul (1mg/ml) in PBS and 0.02% Sodium Azide
Concentration:	lot specific
Purification:	Affinity purified
Conjugation:	Unconjugated
Storage:	Store at -20°C as received.
Stability:	Stable for 12 months from date of receipt.
Gene Name:	neuropeptide FF receptor 2
Database Link:	<a href="#">NP_444264</a> <a href="#">Entrez Gene 10886 Human</a> <a href="#">Q9Y5X5</a>
Synonyms:	GPR74; HLWAR77; NPFF2; NPGPR
Protein Families:	Druggable Genome, Transmembrane
Protein Pathways:	Neuroactive ligand-receptor interaction



[View online »](#)

## Product images:



Western Blot: NPFFR2 Antibody TA309772 -  
Analysis of human NPFF2 in brain lysate using this  
antibody at a dilution of 1:500