

## Product datasheet for **TA309769**

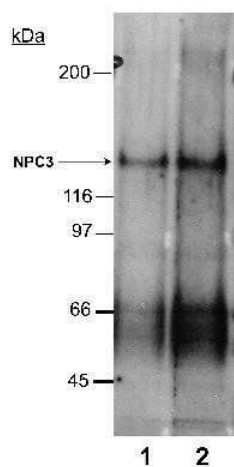
### **NPC1L1 Rabbit Polyclonal Antibody**

#### **Product data:**

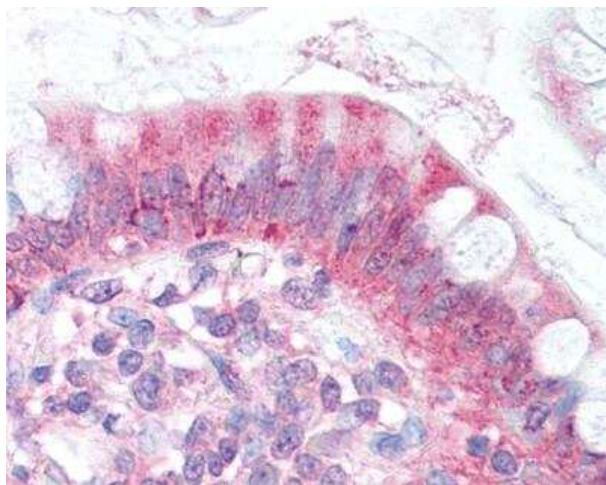
<b>Product Type:</b>	Primary Antibodies
<b>Applications:</b>	IHC, IP, WB
<b>Recommended Dilution:</b>	Immunohistochemistry: 1:50-1:100, Immunoprecipitation, Western Blot: 1:500, Immunohistochemistry-Paraffin: 1:50-1:100
<b>Reactivity:</b>	Human, Mouse, Rat
<b>Host:</b>	Rabbit
<b>Clonality:</b>	Polyclonal
<b>Immunogen:</b>	A synthetic peptide made to an internal region of rat NPC1L1(between residues 500-600).
<b>Formulation:</b>	in Tris-citrate/phosphate, pH 7-8 and 0.01% Sodium Azide
<b>Concentration:</b>	lot specific
<b>Purification:</b>	Immunogen affinity purified
<b>Conjugation:</b>	Unconjugated
<b>Storage:</b>	Store at -20°C as received.
<b>Stability:</b>	Stable for 12 months from date of receipt.
<b>Gene Name:</b>	NPC1 like intracellular cholesterol transporter 1
<b>Database Link:</b>	<a href="#">NP_001095118</a> <a href="#">Entrez Gene 237636</a> <a href="#">MouseEntrez Gene 432367</a> <a href="#">RatEntrez Gene 29881</a> <a href="#">Human Q9UHC9</a>
<b>Synonyms:</b>	NPC11L1
<b>Protein Families:</b>	Druggable Genome, Transmembrane



[View online »](#)

**Product images:**

Western Blot: Niemann-Pick type C1 Like-1 Antibody TA309769 - Detection of NPC3 in rat small intestine membrane preparations (20 ug). (1) 2 ug/ml and (2) 4 ug/ml. ECL: 30 minute exposure.



Immunohistochemistry-Paraffin: Niemann-Pick type C1 Like-1 Antibody TA309769 - Staining of human small intestine, enterocytes.