

## Product datasheet for **TA309762**

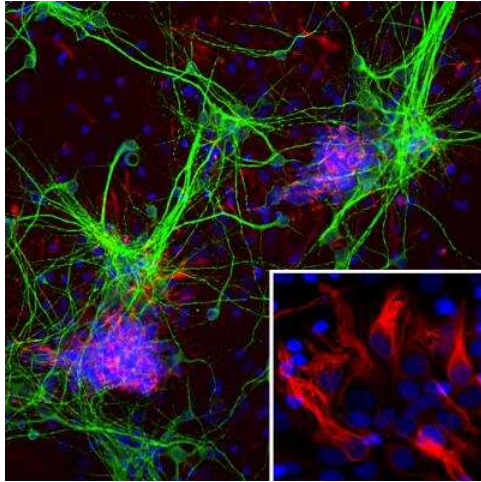
### Nestin (NES) Mouse Monoclonal Antibody [Clone ID: 4D11]

#### Product data:

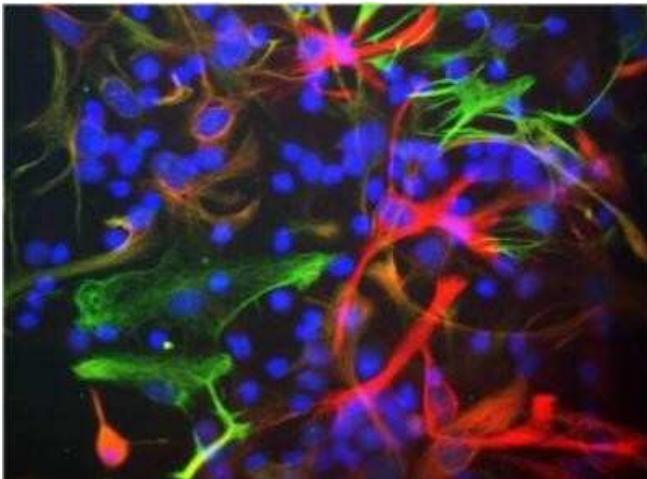
Product Type:	Primary Antibodies
Clone Name:	4D11
Applications:	FC, ICC/IF, IHC, WB
Recommended Dilution:	Flow Cytometry, Western Blot: 1:5000, Immunocytochemistry/ Immunofluorescence: 1:500, Immunohistochemistry
Reactivity:	Human, Mouse, Rat
Host:	Mouse
Isotype:	IgG1
Clonality:	Monoclonal
Immunogen:	A preparation of a segment of recombinant human Nestin (amino acids 317 to 630) expressed in bacteria and highly purified.
Concentration:	lot specific
Purification:	Ascites
Conjugation:	Unconjugated
Storage:	Store at -20°C as received.
Stability:	Stable for 12 months from date of receipt.
Gene Name:	nestin
Database Link:	<a href="#">NP_006608</a> <a href="#">Entrez Gene 18008 Mouse</a> <a href="#">Entrez Gene 25491 Rat</a> <a href="#">Entrez Gene 10763 Human</a> <a href="#">P48681</a>
Synonyms:	Nbla00170
Protein Families:	ES Cell Differentiation/IPS



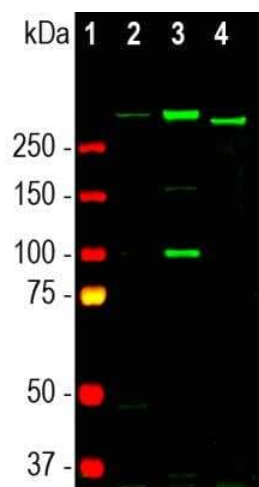
[View online »](#)

**Product images:**

Immunocytochemistry/Immunofluorescence: Nestin Antibody (4D11) TA309762 - Analysis of cortical neuron-glia cell culture from E20 rat stained with mouse mAb to nestin, TA309762, dilution 1:500 in red, and costained with chicken pAb to MAP2, dilution 1:5,000, in green. The blue is Hoechst staining of nuclear DNA. The nestin antibody labels developing astrocytes and neuronal stem cells in a clearly filamentous fashion, while the MAP2 antibody stains dendrites and perikarya of mature neurons.



Immunocytochemistry/Immunofluorescence: Nestin Antibody (4D11) TA309762 - Mixed cultures of neonatal rat neurons and glia stained with TA309762 (red), chicken antibody to Vimentin (NB300-223, green) and DNA (DAPI stain, blue). Astrocytes and neuronal stem cells stain strongly and specifically in a clearly filamentous fashion with the Nestin (4D11) antibody. The filamentous staining pattern is as expected as both Nestin and Vimentin are components of 10nm filaments. Note that some cells contain Nestin, but do not stain strongly for Vimentin and so appear red. Others contain Vimentin and not Nestin and so appear green - these are likely to be fibroblastic or endothelial cells. Some cells express both proteins and so appear yellowish.



Western Blot: Nestin Antibody (4D11) TA309762 - Analysis analysis of tissue and cell lysates with mouse mAB against nestin, TA309762, dilution 1:500 in green: [1] protein standard, [2] embryonic E18 rat brain, [3] C6 rat glioma cells, and [4] SH-SY5Y human neuroblastoma cells.