

## Product datasheet for **TA309761**

### Nucleolin (NCL) Rabbit Polyclonal Antibody

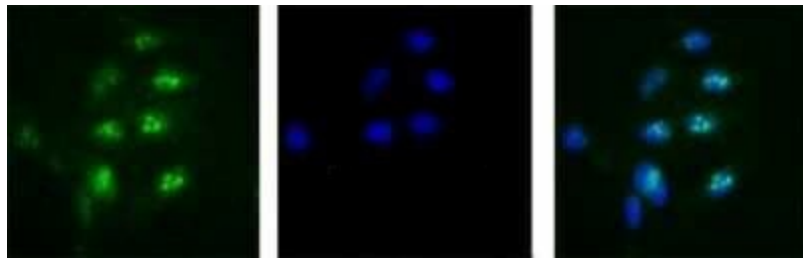
#### Product data:

Product Type:	Primary Antibodies
Applications:	ICC/IF, IHC, WB
Recommended Dilution:	Immunohistochemistry: 1:500-1:1000, Immunohistochemistry-Paraffin: 1:500-1:1000, Western Blot: 1:1000 - 1:2000, Immunocytochemistry/ Immunofluorescence: 1:3000-1:10000, Immunoprecipitation: 1-3ug, Knockdown Validated
Reactivity:	Human, Rat
Host:	Rabbit
Clonality:	Polyclonal
Immunogen:	A 15 residue peptide designed to from C-terminus of the human protein.
Purification:	Whole antisera
Conjugation:	Unconjugated
Storage:	Store at -20°C as received.
Stability:	Stable for 12 months from date of receipt.
Gene Name:	nucleolin
Database Link:	<a href="#">NP_005372</a> <a href="#">Entrez Gene 25135 Rat</a> <a href="#">Entrez Gene 4691 Human</a> <a href="#">P19338</a>
Synonyms:	C23
Protein Families:	Druggable Genome, Stem cell - Pluripotency
Protein Pathways:	Pathogenic Escherichia coli infection

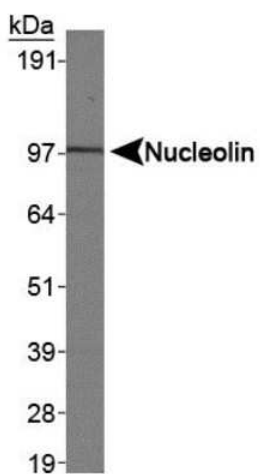


[View online »](#)

## Product images:



Immunocytochemistry/Immunofluorescence:  
Nucleolin Antibody TA309761 - Detection of  
Nucleolin (green) in HeLa cells detected with a  
Dylight-488 conjugated secondary antibody.  
Nuclei are counter stained with Hoechst 33258.



Western Blot: Nucleolin Antibody TA309761 -  
Analysis of Nucleolin in HeLa nuclear extracts.