

Product datasheet for **TA309760**

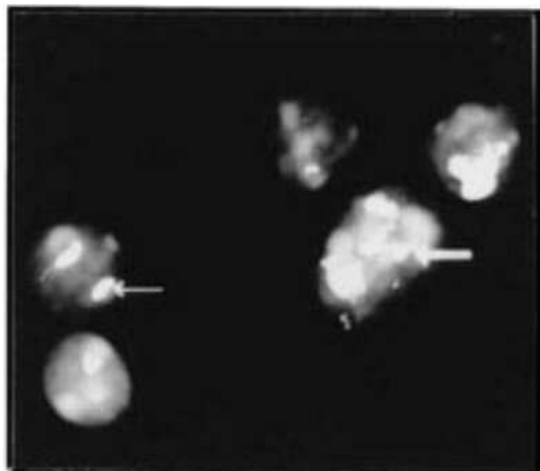
Nucleolin (NCL) Rabbit Polyclonal Antibody

Product data:

Product Type:	Primary Antibodies
Applications:	ChIP, Electron Microscopy, ICC/IF, IHC, Simple Western, WB
Recommended Dilution:	Chromatin Immunoprecipitation (ChIP), Western Blot: 1:4000, Immunomicroscopy, Simple Western: 1:400, Electron Microscopy: 1:10-1:500, Immunocytochemistry/Immunofluorescence: 1:50-1:100, Immunohistochemistry: 1:50-1:100, Immunohistochemistry-Paraffin: 1:50-1:100, Knockdown Validated, Chromatin Immunoprecipitation, Immunohistochemistry Whole-Mount
Reactivity:	Human, Mouse
Host:	Rabbit
Clonality:	Polyclonal
Immunogen:	A fusion protein containing amino acids 284-709 of human nucleolin.
Formulation:	0.1% Sodium Azide
Purification:	Whole antisera
Conjugation:	Unconjugated
Storage:	Store at -20°C as received.
Stability:	Stable for 12 months from date of receipt.
Gene Name:	nucleolin
Database Link:	NP_005372 Entrez Gene 17975 Mouse Entrez Gene 4691 Human P19338
Synonyms:	C23
Protein Families:	Druggable Genome, Stem cell - Pluripotency
Protein Pathways:	Pathogenic Escherichia coli infection



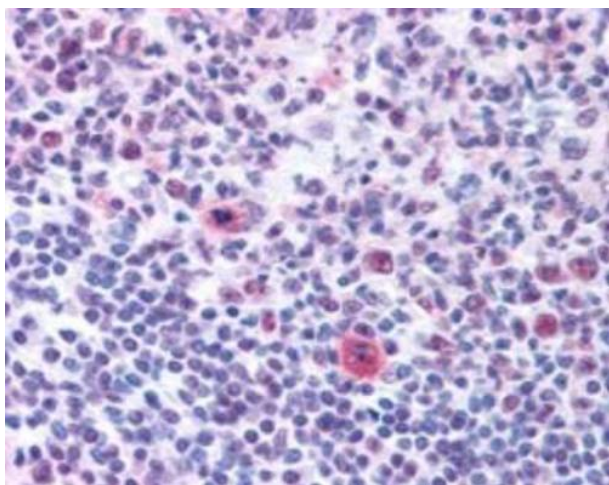
[View online »](#)

Product images:

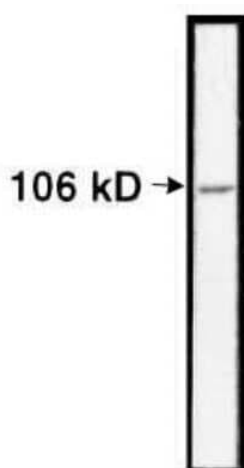
Immunocytochemistry/Immunofluorescence:
Nucleolin Antibody TA309760 - In-situ
immunofluorescent staining of PD31 murine pre-
B cells.



Simple Western: Nucleolin Antibody TA309760 -
Image shows a specific band for Nucleolin in 0.5
mg/mL of HeLa lysate. This experiment was
performed under reducing conditions using the
12-230 kDa separation system.



Immunohistochemistry: Nucleolin Antibody TA309760 - Detection of Nucleolin in human tonsil germinal center.



Western Blot: Nucleolin Antibody TA309760 - Detection of nucleolin in crude PD31 nuclear extracts.