

## Product datasheet for **TA309758**

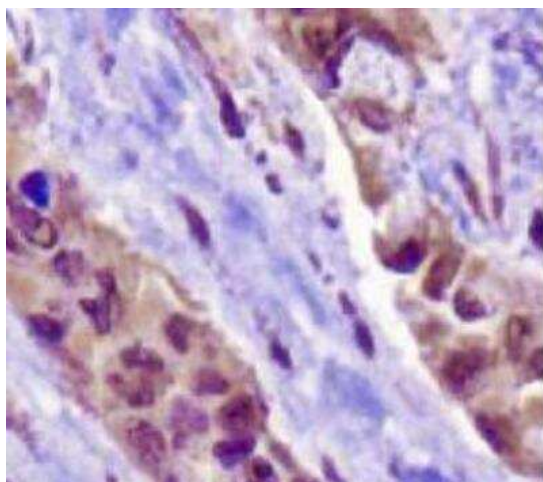
### **NAPSIN A (NAPSA) Mouse Monoclonal Antibody [Clone ID: TMU-Ad02]**

#### **Product data:**

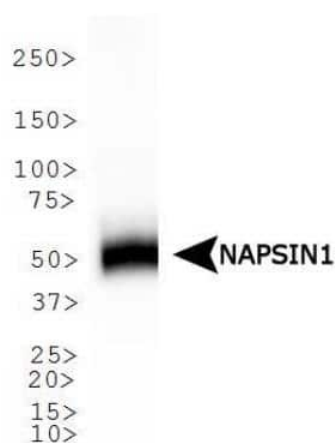
Product Type:	Primary Antibodies
Clone Name:	TMU-Ad02
Applications:	IHC, WB
Recommended Dilution:	Immunohistochemistry: 0.5-1 ug/ml, Western Blot: 0.5-1 ug/ml, Immunohistochemistry-Paraffin: 0.5-1 ug/ml
Reactivity:	Human
Host:	Mouse
Isotype:	IgG1
Clonality:	Monoclonal
Immunogen:	Synthetic peptide corresponding to the N-terminus of human NAPSIN1
Formulation:	Tris-glycine, 150mM NaCl pH 7.5 and 0.05% Sodium Azide
Concentration:	lot specific
Purification:	Protein A purified
Conjugation:	Unconjugated
Storage:	Store at -20°C as received.
Stability:	Stable for 12 months from date of receipt.
Gene Name:	napsin A aspartic peptidase
Database Link:	<a href="#">NP_004842</a> <a href="#">Entrez Gene 9476 Human</a> <a href="#">O96009</a>
Synonyms:	KAP; Kdap; NAP1; NAPA; SNAPA
Protein Families:	Druggable Genome, Protease
Protein Pathways:	Lysosome

[View online »](#)

## Product images:



Immunohistochemistry-Paraffin: Napsin-A Antibody (TMU-Ad02) TA309758 - Analysis of NAPSA on human lung adenocarcinoma using TA309758.



Western Blot: Napsin-A Antibody (TMU-Ad02) TA309758 - Analysis of NAPSA expression in human lung using TA309758.