

Product datasheet for **TA309757**

NAPE PLD (NAPEPLD) Rabbit Polyclonal Antibody

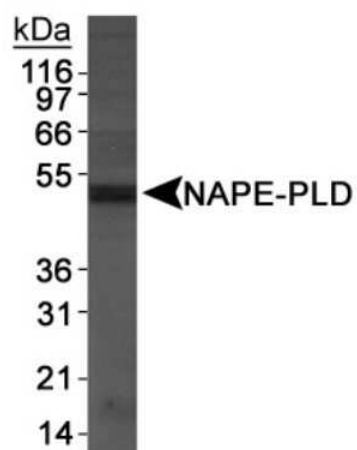
Product data:

Product Type:	Primary Antibodies
Applications:	ICC/IF, WB
Recommended Dilution:	Immunocytochemistry/ Immunofluorescence: 1:1000-1:5000, Western Blot: 1:2500-1:5000
Reactivity:	Human, Mouse, Rat
Host:	Rabbit
Clonality:	Polyclonal
Immunogen:	Synthetic peptide made to an internal portion of the mouse protein (within residues 1-100). [Swiss-Prot# Q8BH82]
Formulation:	PBS and 0.1% Sodium Azide
Purification:	Whole antisera
Conjugation:	Unconjugated
Storage:	Store at -20°C as received.
Stability:	Stable for 12 months from date of receipt.
Gene Name:	N-acyl phosphatidylethanolamine phospholipase D
Database Link:	NP_945341 Entrez Gene 242864 Mouse Entrez Gene 296757 Rat Entrez Gene 222236 Human Q6IQ20
Synonyms:	FMP30; NAPE-PLD



[View online »](#)

Product images:



Western Blot: NAPE-PLD Antibody TA309757 -
Detection of NAPE-PLD antibody in DU145 cell
extracts.