

## Product datasheet for **TA309755**

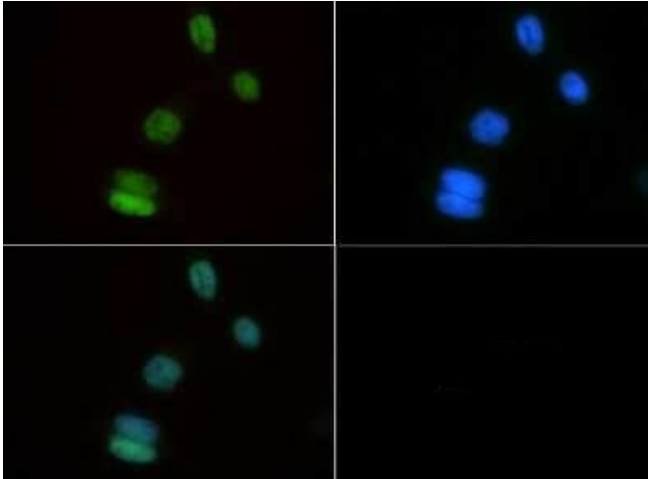
### MYOD1 Rabbit Polyclonal Antibody

#### Product data:

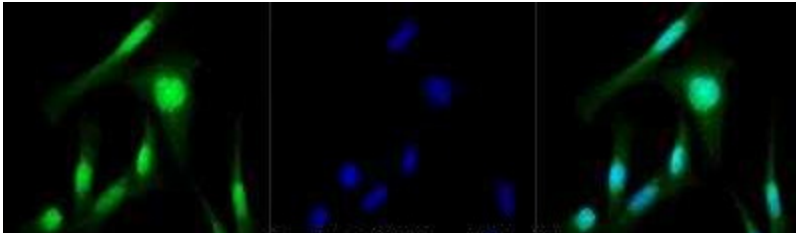
Product Type:	Primary Antibodies
Applications:	ICC/IF, WB
Recommended Dilution:	Immunocytochemistry/ Immunofluorescence: 1:100, Western Blot: 1:5000
Reactivity:	Human, Mouse
Host:	Rabbit
Clonality:	Polyclonal
Immunogen:	A genomic peptide made to an N-terminal region of the human MyoD1 protein (within residues 1-150). [Swiss-Prot P15172]
Formulation:	PBS, 0.1% BSA, 50% glycerol and 0.05% Sodium Azide
Concentration:	lot specific
Purification:	Affinity purified
Conjugation:	Unconjugated
Storage:	Store at -20°C as received.
Stability:	Stable for 12 months from date of receipt.
Gene Name:	myogenic differentiation 1
Database Link:	<a href="#">NP_002469</a> <a href="#">Entrez Gene 17927 Mouse</a> <a href="#">Entrez Gene 4654 Human</a> <a href="#">P15172</a>
Synonyms:	bHLHc1; MYF3; MYOD; PUM
Protein Families:	Druggable Genome, Transcription Factors



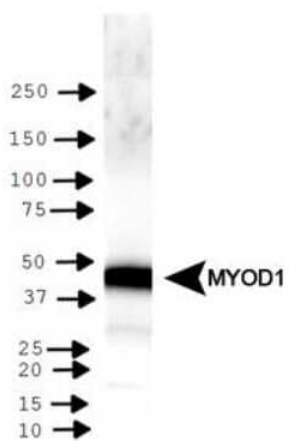
[View online »](#)

**Product images:**

Immunocytochemistry/Immunofluorescence:  
MyoD Antibody TA309755 - Staining of MYOD1 in  
RD cells with FITC (green). Nuclei were  
counterstained with DAPI (blue).



Immunocytochemistry/Immunofluorescence:  
MyoD Antibody TA309755 - RD cells were fixed  
for 10 minutes using 10% formalin and then  
permeabilized for 5 minutes using 1X PBS + 0.5%  
Triton X-100. The cells were incubated with anti-  
MyoD at 5 ug/ml overnight at 4C and detected  
with an anti-rabbit DyLight 488 (Green) at a 1:500  
dilution. Nuclei were counterstained with DAPI  
(Blue). Cells were imaged using a 40X objective.



Western Blot: MyoD1 Antibody TA309755 -  
Detection of MYOD1 in RH30 cells.