

Product datasheet for **TA309752**

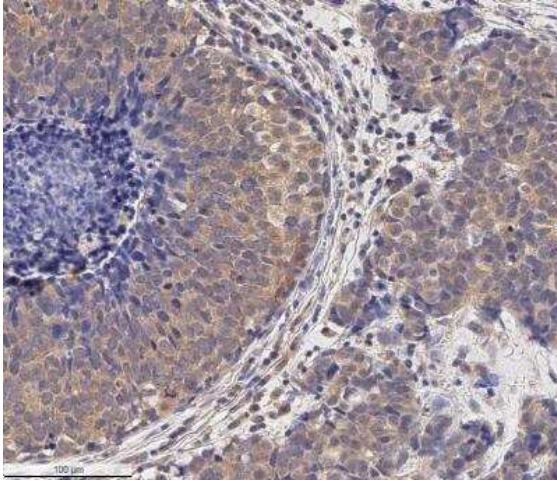
MMP2 Mouse Monoclonal Antibody [Clone ID: 2C1]

Product data:

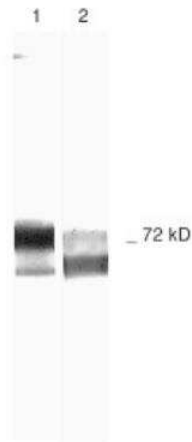
Product Type:	Primary Antibodies
Clone Name:	2C1
Applications:	ELISA, FC, ICC/IF, IHC, IP, WB
Recommended Dilution:	Western Blot: 2-5 ug/ml, Immunohistochemistry-Frozen: 5 ug/ml, ELISA: 1 ug/ml, Immunohistochemistry: 5 ug/ml, Immunoprecipitation: 1:10-1:500, Flow Cytometry, Immunohistochemistry-Paraffin, Immunocytochemistry/ Immunofluorescence
Reactivity:	Human, Mouse, Rat
Host:	Mouse
Isotype:	IgG1, kappa
Clonality:	Monoclonal
Immunogen:	Activated recombinant human MMP-2.
Formulation:	PBS and 0.05% Sodium Azide
Concentration:	lot specific
Purification:	Protein G purified
Conjugation:	Unconjugated
Storage:	Store at -20°C as received.
Stability:	Stable for 12 months from date of receipt.
Gene Name:	matrix metalloproteinase 2
Database Link:	NP_004521 Entrez Gene 17390 Mouse Entrez Gene 81686 Rat Entrez Gene 4313 Human P08253
Synonyms:	CLG4; CLG4A; MMP-2; MMP-II; MONA; TBE-1
Protein Families:	Druggable Genome, Protease
Protein Pathways:	Bladder cancer, GnRH signaling pathway, Leukocyte transendothelial migration, Pathways in cancer



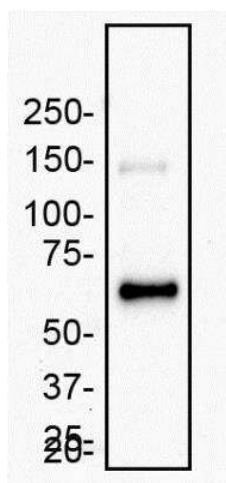
[View online »](#)

Product images:

Immunohistochemistry-Paraffin: MMP-2 Antibody (2C1) - (Pro and Active) TA309752 - Analysis of a FFPE human breast cancer section using 5 ug/ml conc. of MMP2 antibody (clone 2C1) on a Bond Rx autostainer (Leica Biosystems). The assay involved 20 minutes of heat induced antigen retrieval (HIER) with 10mM sodium citrate buffer (pH 6.0) and endogenous peroxidase quenching using peroxide block. The sections were incubated with primary antibody for 30 minutes. Bond Polymer Refine Detection (Leica Biosystems) and DAB were used for signal detection which followed counterstaining with hematoxylin. Whole slide scanning and capturing of representative images (20X) were performed using Aperio AT2 (Leica Biosystems). MMP2 immunoreactivity was observed in the cytoplasm of the cancer cells and the stromal cells, and in the inter-cellular spaces (secreted MMP2). The cancer cells present in the core of tumor areas were found to be negative for MMP2 staining.



Western Blot: MMP-2 Antibody (2C1) - (Pro and Active) TA309752 - Samples: 1) Human Recombinant MMP-2, and 2) Schwann Cell Culture Medium Run on 10% SDS-PAGE, followed by electroblot to nitrocellulose and slot blot immunolabeling. Antibodies: primary - TA309752, secondary - anti-mouse-biotin. Detection: avidin-HRP. Chromagen: DAB/H202.



Western Blot: MMP-2 Antibody (2C1) - (Pro and Active) TA309752 - Recombinant human MMP-2 expressed from CHO cells was separated on a 7.5 % gel by SDS-PAGE, transferred to PVDF membrane and blocked in 5% non-fat milk in TBST. The membrane was probed with 2.0 ug/ml anti-MMP-2 in blocking buffer and detected with an anti-mouse HRP secondary antibody using chemiluminescence.