

Product datasheet for **TA309751**

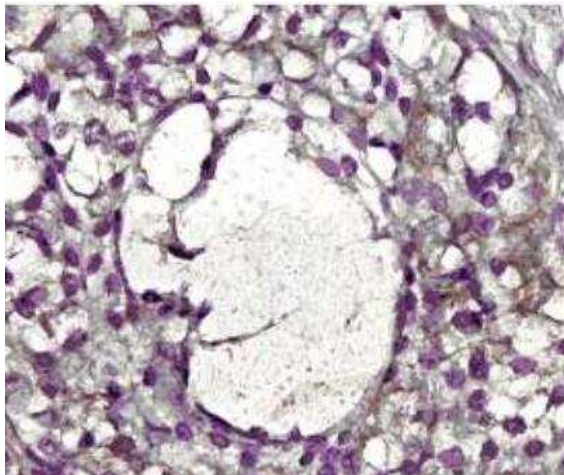
MMP2 Mouse Monoclonal Antibody [Clone ID: 8B4]

Product data:

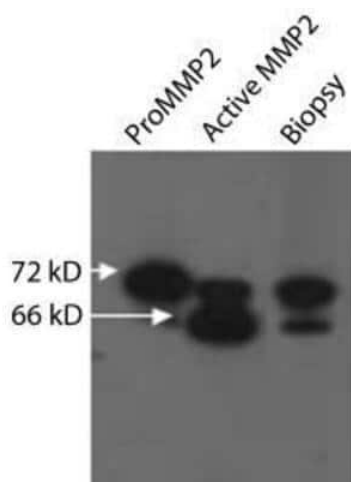
Product Type:	Primary Antibodies
Clone Name:	8B4
Applications:	ELISA, ICC/IF, IHC, IP, WB
Recommended Dilution:	Immunocytochemistry/ Immunofluorescence: 1:10-1:500, Western Blot: 1-2ug/ml, Immunohistochemistry: 2 ug/ml, Immunohistochemistry-Paraffin: 2 ug/ml, Immunohistochemistry-Frozen: 2ug/ml, Knockdown Validated, ELISA: 0.03 ug/ml, Immunoprecipitation
Reactivity:	Human, Mouse, Rat
Host:	Mouse
Isotype:	IgG1, kappa
Clonality:	Monoclonal
Immunogen:	Activated recombinant human MMP2.
Formulation:	Depleted culture medium in PBS and 0.05% Sodium Azide
Concentration:	lot specific
Purification:	Protein G purified
Conjugation:	Unconjugated
Storage:	Store at -20°C as received.
Stability:	Stable for 12 months from date of receipt.
Gene Name:	matrix metalloproteinase 2
Database Link:	NP_004521 Entrez Gene 17390 Mouse Entrez Gene 81686 Rat Entrez Gene 4313 Human P08253
Synonyms:	CLG4; CLG4A; MMP-2; MMP-II; MONA; TBE-1
Protein Families:	Druggable Genome, Protease
Protein Pathways:	Bladder cancer, GnRH signaling pathway, Leukocyte transendothelial migration, Pathways in cancer



[View online »](#)

Product images:

Immunohistochemistry-Paraffin: MMP-2 Antibody (8B4) - (Pro and Active) TA309751 - Detection of MMP-2 staining in FFPE human ovary tissue. Primary antibody was used at 2.5 ug/ml with the avidin-biotin-peroxidase detection method.



Western Blot: MMP-2 Antibody (8B4) - (Pro and Active) TA309751 - Analysis of MMP2 expression in ProMMP2 (1), Active MMP2 (2) and human pressure ulcer biopsy (3).