

Product datasheet for **TA309750**

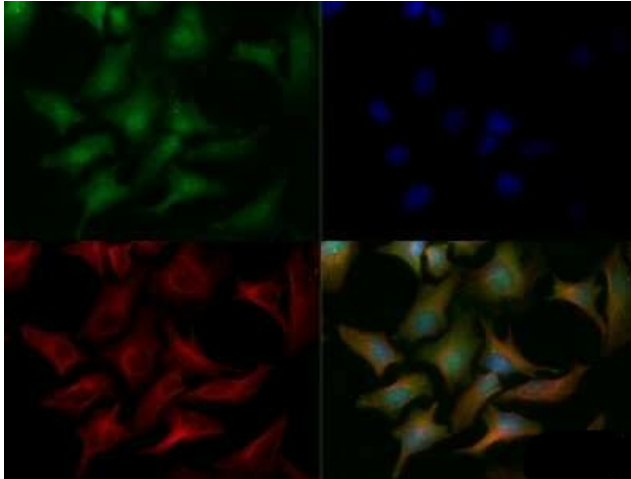
CHREBP (MLXIPL) Rabbit Polyclonal Antibody

Product data:

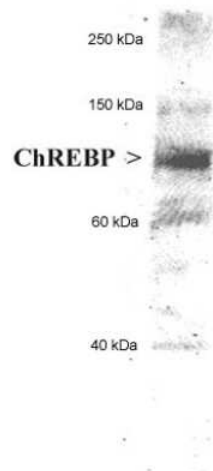
Product Type:	Primary Antibodies
Applications:	ChIP, ICC/IF, IHC, Immunoblotting, IP, SDS-PAGE, WB
Recommended Dilution:	Chromatin Immunoprecipitation (ChIP): 1:10-1:500, Immunohistochemistry: 1:100, Western Blot: 1:1000, Immunohistochemistry-Paraffin: 1:100, SDS-Page, Chromatin Immunoprecipitation: 1:10 - 1:500, Gel Super Shift Assays, Immunoblotting, Knockout Validated, Immunoprecipitation: 1:10 - 1:500, Immunocytochemistry/ Immunofluorescence: 1:100 - 1:500
Reactivity:	Human, Mouse, Rat
Host:	Rabbit
Clonality:	Polyclonal
Immunogen:	An C-terminal synthetic peptide made to the human ChREBP protein sequence (between residues 800-852). [NCBI# NP_116569.1, isoform 1/alpha]
Formulation:	in Tris-citrate/phosphate, pH 7-8 and 0.01% Sodium Azide
Concentration:	lot specific
Purification:	Immunogen affinity purified
Conjugation:	Unconjugated
Storage:	Store at -20°C as received.
Stability:	Stable for 12 months from date of receipt.
Gene Name:	MLX interacting protein like
Database Link:	NP_116571 Entrez Gene 58805 Mouse Entrez Gene 171078 Rat Entrez Gene 51085 Human Q9NP71
Synonyms:	bHLHd14; CHREBP; MIO; MLX; MONDOB; WBSCR14; WS-bHLH



[View online »](#)

Product images:

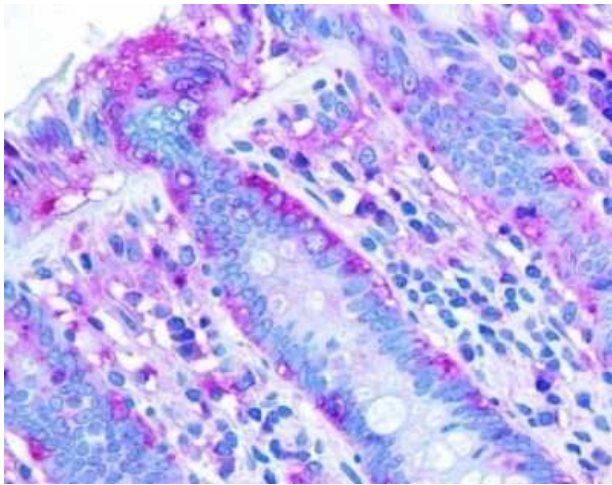
Immunocytochemistry/Immunofluorescence: CHREBP Antibody - BSA Free TA309750 - CHREBP Antibody TA309750 - HeLa cells were fixed for 10 minutes using 10% formalin and permeabilized for 5 minutes using 1X TBS + 0.5% Triton X-100. The cells were incubated with anti-ChREBP (TA309750) at a 1:200 dilution overnight at 4C and detected with an anti-rabbit DyLight 488 (Green) at a 1:500 dilution. Alpha tubulin was used as a co-stained at 1:1000 and detected with an anti-mouse DyLight 550 (Red) at a 1:500. Nuclei were counterstained with DAPI (Blue). Cells were imaged using a 40X objective.



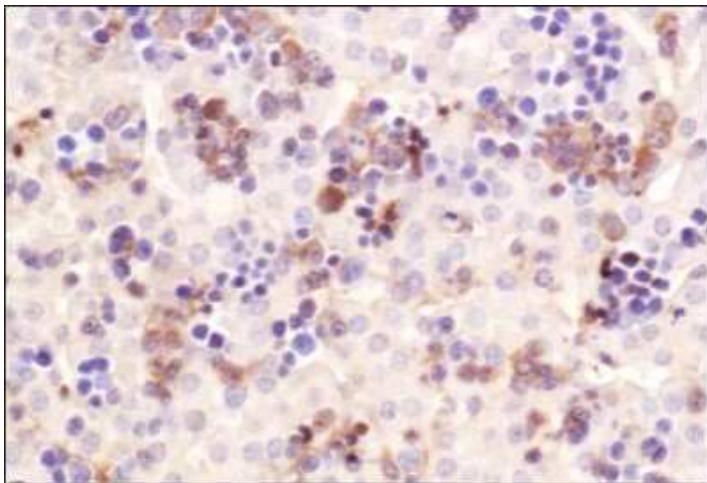
Western Blot: CHREBP Antibody - BSA Free TA309750 - CHREBP Antibody TA309750 - Detection of ChREBP in 20 ug of human hepatocyte lysate using TA309750. 5-10 second film exposure.



Analysis of protein levels in livers transfected with GK and GKA456V. Livers excised from mice in postabsorptive state were homogenized and resolved by Western blot. (a, b) Representative blots from three independent experiments. The densitometric analysis is presented (N = 4, *P < 0.05 versus pControl, ***P < 0.001 versus pGKA456V). (c) Liver sections of 5-hour fasted mice injected with pControl, pGK, or pGKA456V were immunostained with Glc6Pase antibody. TO-PRO-3 was used to visualize nuclei.



Immunohistochemistry-Paraffin: CHREBP Antibody - BSA Free TA309750 - CHREBP Antibody TA309750 - Staining of human colon, epithelium at a 40X magnification.



Immunohistochemistry: CHREBP Antibody - BSA Free TA309750 - CHREBP Antibody TA309750 - Analysis of CHREBP in mouse liver using DAB with hematoxylin counterstain.