

Product datasheet for **TA309747**

Mitofusin 1 (MFN1) Mouse Monoclonal Antibody [Clone ID: 11E9-1H12]

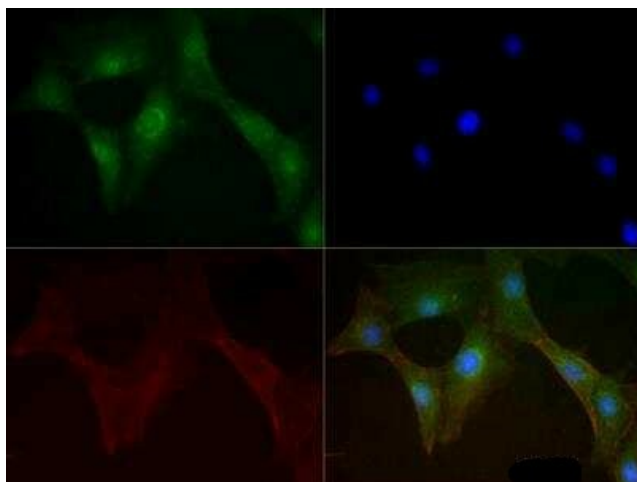
Product data:

Product Type:	Primary Antibodies
Clone Name:	11E9-1H12
Applications:	ICC/IF, IHC, WB
Recommended Dilution:	Knockout Validated, Immunohistochemistry: 1:100, Immunocytochemistry/ Immunofluorescence: 1:100, Western Blot: 1:500-1:1000, Immunohistochemistry-Paraffin: 1:100
Reactivity:	Human, Mouse
Host:	Mouse
Isotype:	IgG
Clonality:	Monoclonal
Immunogen:	Mouse MFN1 [Swiss-Prot# Q811U4]
Formulation:	Tris-glycine, 150mM NaCl pH 7.5 and 0.05% Sodium Azide
Purification:	Protein G purified
Conjugation:	Unconjugated
Storage:	Store at -20°C as received.
Stability:	Stable for 12 months from date of receipt.
Gene Name:	mitofusin 1
Database Link:	NP_060397 Entrez Gene 67414 Mouse Entrez Gene 55669 Human Q8IWA4
Synonyms:	DKFZp762F247; FLJ20693; hfzo1; hfzo2; MGC41806; mitochondrial transmembrane GTPase Fzo-1; mitochondrial transmembrane GTPase FZO-2; mitofusin 1; putative transmembrane GTPase

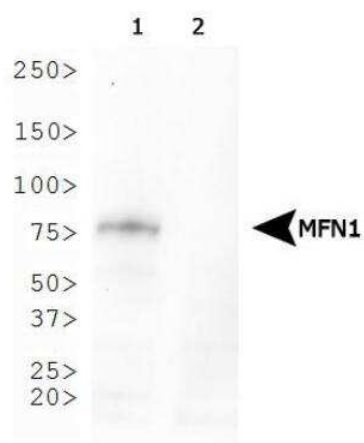


[View online »](#)

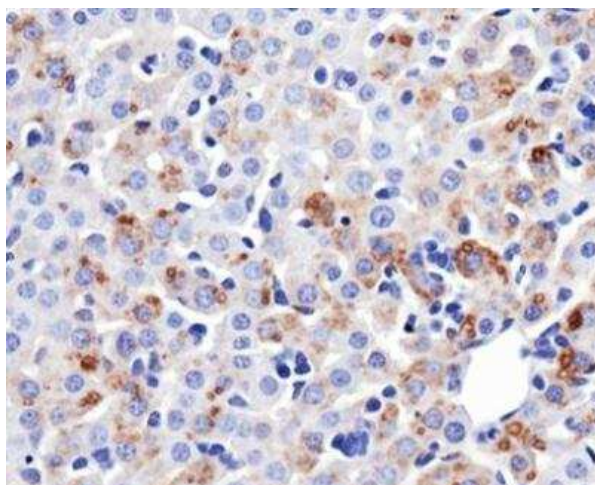
Product images:



Immunocytochemistry/Immunofluorescence: Mitofusin 1 Antibody (11E9-1H12) TA309747 - Antibody was tested in 3T3 cells with DyLight 488 (green). Nuclei and alpha-tubulin were counterstained with DAPI (blue) and Dylight 550 (red).



Western Blot: Mitofusin 1 Antibody (11E9-1H12) TA309747 - Analysis of Mitofusin-1 expression in (1) MEF wild-type and (2) MEF Mitofusin-1-null whole cell lysates using TA309747.



Immunohistochemistry-Paraffin: Mitofusin 1 Antibody (11E9-1H12) TA309747 - Analysis of Mitofusin-1 in mouse liver.