

## Product datasheet for **TA309742**

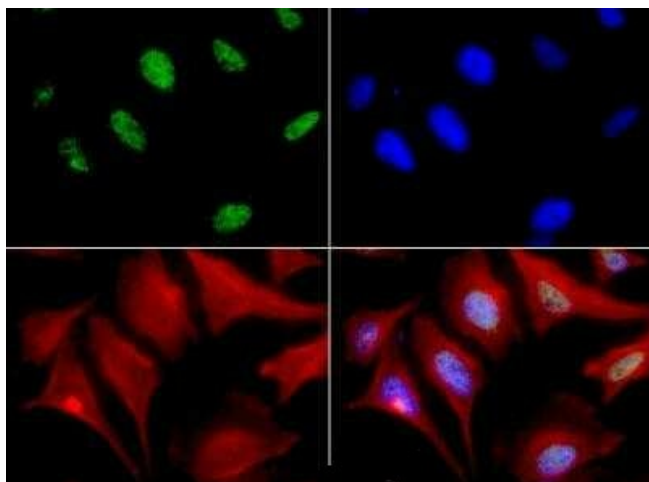
### MBD4 Rabbit Polyclonal Antibody

#### Product data:

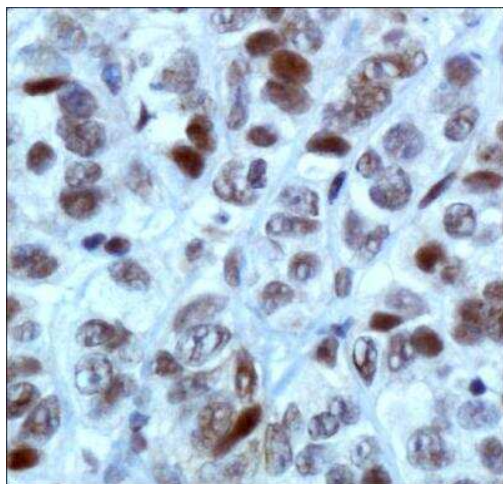
Product Type:	Primary Antibodies
Applications:	ICC/IF, IHC, WB
Recommended Dilution:	Immunocytochemistry/ Immunofluorescence: 1:200, Immunohistochemistry-Paraffin: 1:400, Western Blot (Negative), Immunohistochemistry: 1:400
Reactivity:	Human
Host:	Rabbit
Clonality:	Polyclonal
Immunogen:	A synthetic peptide made to an internal portion of the human MBD4 protein (between residues 200-250) [UniProt O95243]
Formulation:	PBS, 30% glycerol and 0.05% Sodium Azide
Concentration:	lot specific
Purification:	Affinity purified
Conjugation:	Unconjugated
Storage:	Store at -20°C as received.
Stability:	Stable for 12 months from date of receipt.
Gene Name:	methyl-CpG binding domain 4, DNA glycosylase
Database Link:	<a href="#">NP_003916</a> <a href="#">Entrez Gene 8930 Human</a> <a href="#">O95243</a>
Synonyms:	MED1
Protein Families:	Druggable Genome
Protein Pathways:	Base excision repair



[View online »](#)

**Product images:**

Immunocytochemistry/Immunofluorescence: MBD4 Antibody TA309742 - MBD4 antibody was tested in HeLa cells with FITC (green). Nuclei and alpha-tubulin were counterstained with DAPI (blue) and Dylight 550 (red).



Immunohistochemistry: MBD4 Antibody TA309742 - IHC analysis of MBD4 in human breast cancer cells using DAB with hematoxylin counterstain.