

Product datasheet for **TA309741**

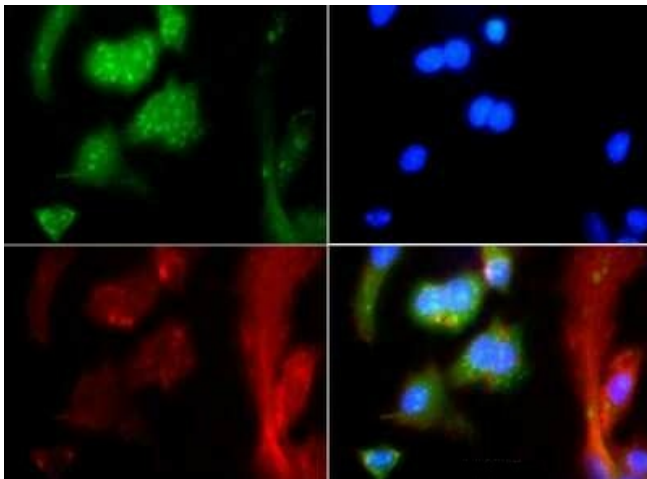
MAS1 Rabbit Polyclonal Antibody

Product data:

Product Type:	Primary Antibodies
Applications:	ICC/IF, IHC, Simple Western, WB
Recommended Dilution:	Western Blot: 1:1000, Immunohistochemistry-Paraffin: 1:100, Simple Western: 1:100, Immunohistochemistry: 1:100, Immunocytochemistry/ Immunofluorescence: 1:25
Reactivity:	Human, Mouse, Primate, Rat
Host:	Rabbit
Clonality:	Polyclonal
Immunogen:	A synthetic peptide made to an internal portion of the human MAS1 protein (between residues 75-125) [UniProt P04201]
Formulation:	PBS, 30% glycerol and 0.05% Sodium Azide
Purification:	Affinity purified
Conjugation:	Unconjugated
Storage:	Store at -20°C as received.
Stability:	Stable for 12 months from date of receipt.
Gene Name:	MAS1 proto-oncogene, G protein-coupled receptor
Database Link:	NP_002368 Entrez Gene 17171 Mouse Entrez Gene 25153 Rat Entrez Gene 4142 Human P04201
Synonyms:	MAS; MGRA
Protein Families:	Druggable Genome, GPCR, Transmembrane
Protein Pathways:	Neuroactive ligand-receptor interaction, Renin-angiotensin system



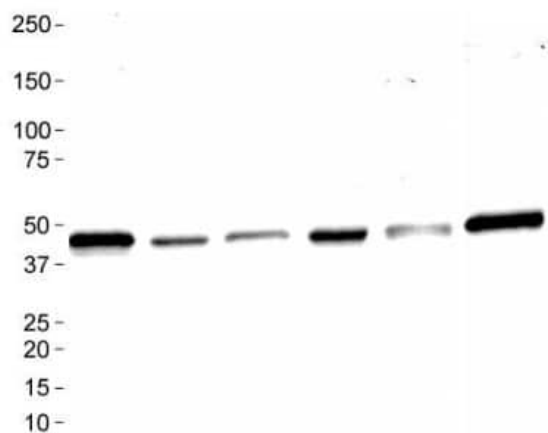
[View online »](#)

Product images:

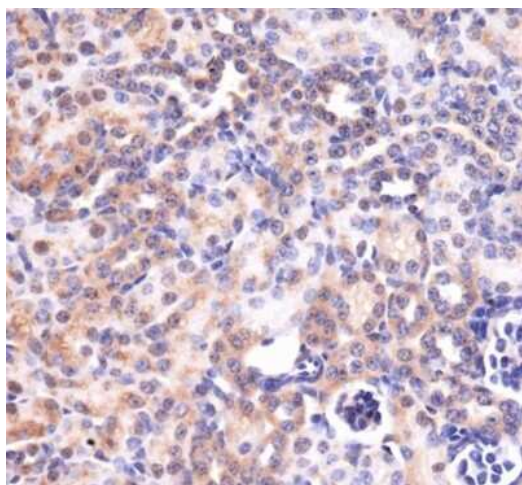
Immunocytochemistry/Immunofluorescence:
Mas Antibody TA309741 - Tested at 1:25 in
HepG2 cells with FITC (green). Nuclei were
counterstained with DAPI (blue).



Simple Western: Mas Antibody TA309741 - Lane
view shows a specific band for MAS1 in 0.5 mg/ml
of HepG2 lysate. This experiment was performed
under reducing conditions using the 12-230 kDa
separation system.



Western Blot: Mas Antibody TA309741 - Analysis of MAS1 in: (1) Ntera 2, (2) A431, (3) HepG2, (4) MCF7, (5) 3T3, and (6) Cos7.



Immunohistochemistry: Mas Antibody TA309741 - Analysis of MAS1 in mouse kidney using DAB with hematoxylin counterstain.