

Product datasheet for **TA309737**

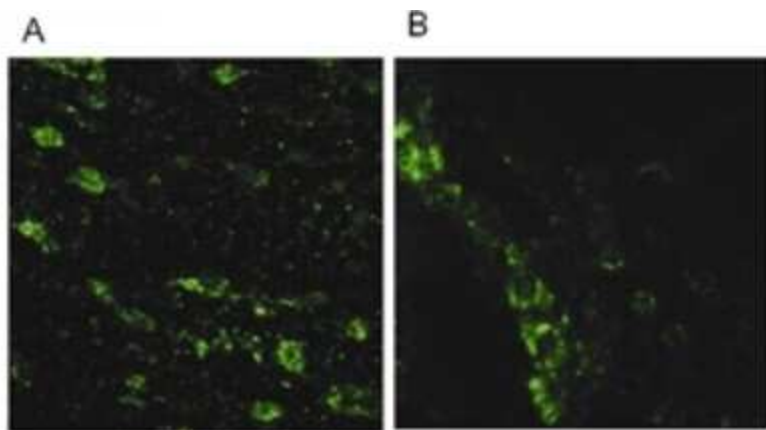
LRRK2 Rabbit Polyclonal Antibody

Product data:

Product Type:	Primary Antibodies
Applications:	FC, ICC/IF, IHC, IP, WB
Recommended Dilution:	Immunohistochemistry-Paraffin, Immunohistochemistry-Frozen, Immunohistochemistry: 1:200-1:500, Immunocytochemistry/ Immunofluorescence: 1:500-1:1000, Immunoprecipitation: 1:10-1:500, Western Blot: 1:1000, Knockdown Validated, Knockout Validated, Flow (Cell Surface)
Reactivity:	Human, Mouse, Porcine, Primate, Rat
Host:	Rabbit
Clonality:	Polyclonal
Immunogen:	A synthetic peptide made to a C-terminal region, within residues 2507–2527 of the human LRRK2 protein, conjugated to KLH. [Swiss-Prot# Q5S007]
Formulation:	Tris-citrate/phosphate, pH 7-8 and 0.05% Sodium Azide
Concentration:	lot specific
Purification:	Affinity purified
Conjugation:	Unconjugated
Storage:	Store at -20°C as received.
Stability:	Stable for 12 months from date of receipt.
Gene Name:	leucine-rich repeat kinase 2
Database Link:	NP_940980 Entrez Gene 66725 Mouse Entrez Gene 300160 Rat Entrez Gene 120892 Human Q5S007
Synonyms:	AURA17; DARDARIN; PARK8; RIPK7; ROCO2
Protein Families:	Druggable Genome, Protein Kinase
Protein Pathways:	Parkinson's disease


[View online »](#)

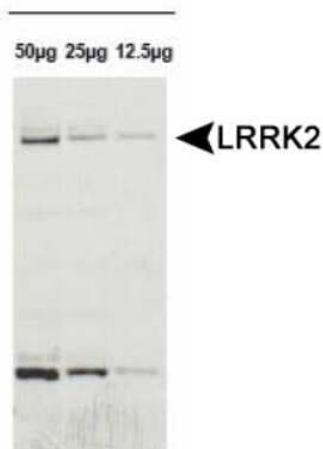
Product images:



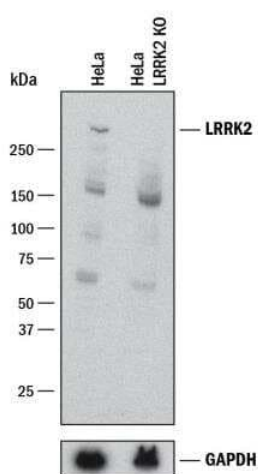
Immunocytochemistry/Immunofluorescence:
LRRK2 Antibody TA309737 - Immunofluorescence
of Lrrk2 with TA309737 within (A) Substantia
nigra neurons (B) Chains of migrating
neuroblasts.



Immunohistochemistry-Frozen: LRRK2 Antibody
TA309737 - DAB Immunostaining in frozen
sections of mouse brainstem.



Western Blot: LRRK2 Antibody TA309737 - TA309737 in increasing amounts of human lymphoblast



Knockout Validated: LRRK2 Antibody TA309737 - Western blot shows lysates of HeLa human cervical epithelial carcinoma parental cell line and LRRK2 knockout (KO) HeLa cell line. PVDF membrane was probed with 1:1000 of Rabbit Anti-Human LRRK2 Polyclonal Antibody (Catalog # TA309737) followed by HRP-conjugated Anti-Rabbit IgG Secondary Antibody (Catalog #HAF008). Specific band was detected for LRRK2 at approximately 275 kDa (as indicated) in the parental HeLa cell line, but is not detectable in the knockout HeLa cell line. This experiment was conducted under reducing conditions.