

## Product datasheet for **TA309736**

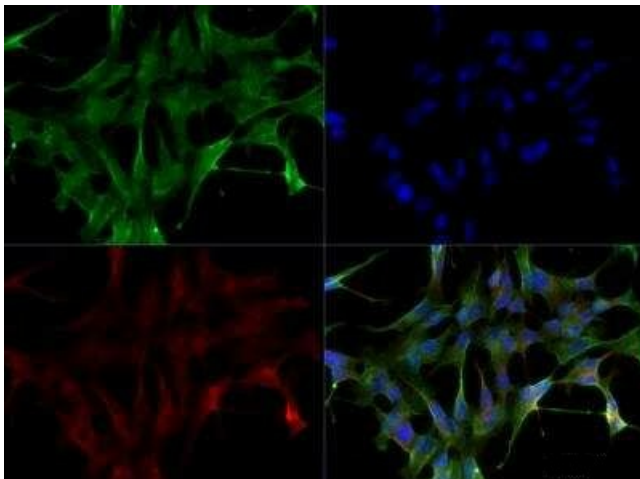
### LRRK2 Rabbit Polyclonal Antibody

#### Product data:

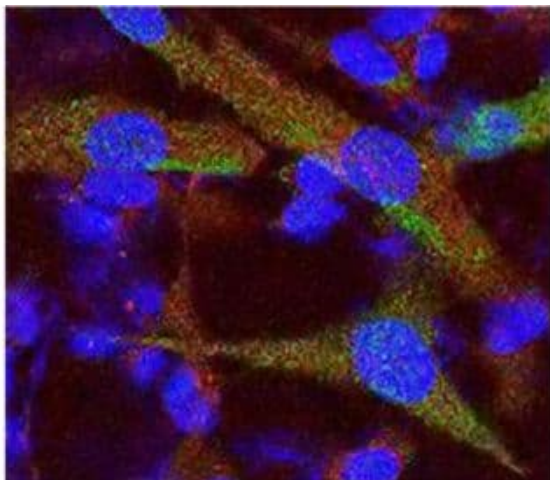
Product Type:	Primary Antibodies
Applications:	FC, ICC/IF, IHC, IP, WB
Recommended Dilution:	Knockout Validated, Immunohistochemistry-Frozen, Immunoprecipitation: 1:10-1:500, Western Blot: 1 - 2 ug/ml, Flow Cytometry: 2.5 ug/ml, Flow (Intracellular): 2.5 ug/ml, Immunocytochemistry/ Immunofluorescence: 2 - 5 ug/ml, Immunohistochemistry: 1:200, Immunohistochemistry-Paraffin: 1:200
Reactivity:	Bovine, Human, Mouse
Host:	Rabbit
Clonality:	Polyclonal
Immunogen:	A C-terminal synthetic peptide made to the human LRRK2 protein sequence (between residues 2500-2527).
Formulation:	Tris-citrate/phosphate, pH 7-8 and 0.1% Sodium Azide
Concentration:	lot specific
Purification:	Affinity purified
Conjugation:	Unconjugated
Storage:	Store at -20°C as received.
Stability:	Stable for 12 months from date of receipt.
Gene Name:	leucine-rich repeat kinase 2
Database Link:	<a href="#">NP_940980</a> <a href="#">Entrez Gene 66725 Mouse</a> <a href="#">Entrez Gene 120892 Human</a> <a href="#">Q5S007</a>
Synonyms:	AURA17; DARDARIN; PARK8; RIPK7; ROCO2
Protein Families:	Druggable Genome, Protein Kinase
Protein Pathways:	Parkinson's disease



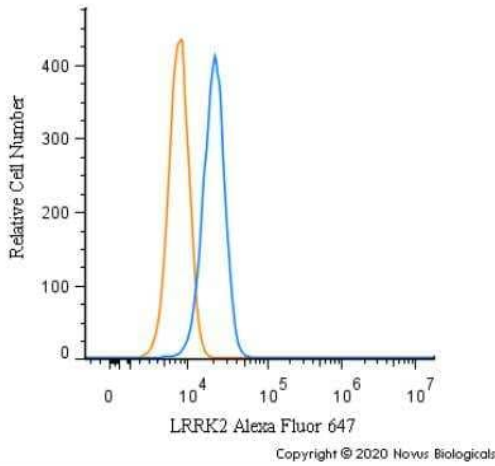
[View online »](#)

**Product images:**

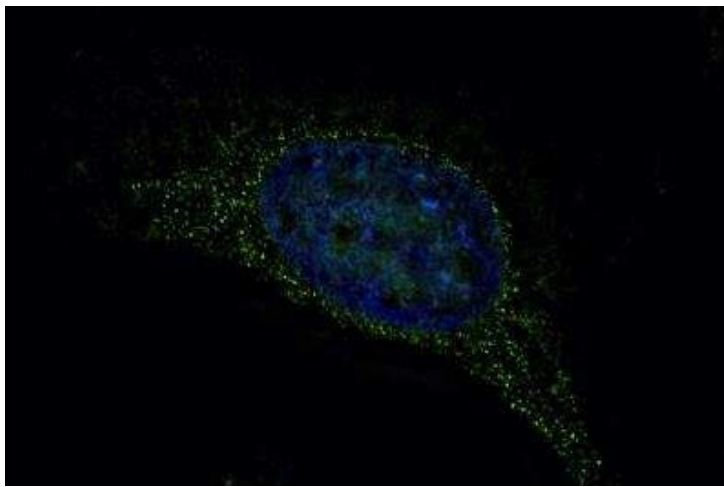
Immunocytochemistry/Immunofluorescence: LRRK2 Antibody TA309736 - LRRK2 antibody was tested in SH-SY-5Y cells at a 1:200 dilution against DyLight 488 (Green). Alpha tubulin and nuclei were counterstained against DyLight 568 (Red), and DAPI (Blue), respectively.

**A**

The interaction and phosphorylation of LRRK2 and LC1. (A) Cellular co-localisation of endogenous LRRK2 and MAP1B (LC1). SKNSH cells were labelled with LRRK2 (green) and LC1 (red) antibodies and signals were detected by immunofluorescence. Detailed figure in Additional file 1.

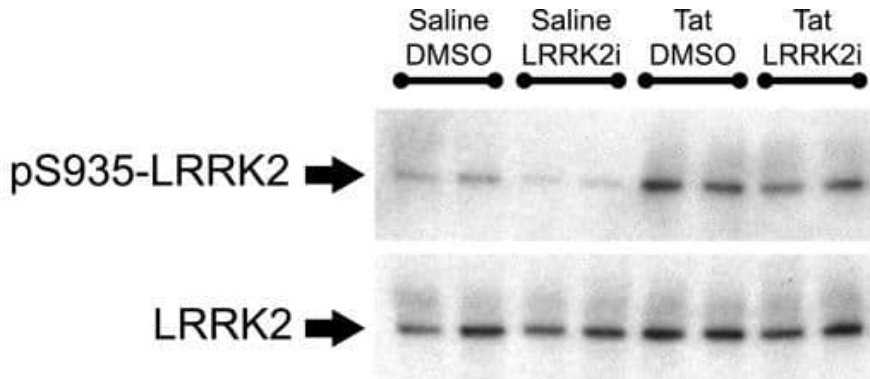


Flow Cytometry: LRRK2 Antibody TA309736 - An intracellular stain was performed on U2OS cells with LRRK Antibody TA309736AF647 (blue) and a matched isotype control (orange). Cells were fixed with 4% PFA and then permeabilized with 0.1% saponin. Cells were incubated in an antibody dilution of 2.5 ug/mL for 30 minutes at room temperature. Both antibodies were conjugated to Alexa Fluor 647.

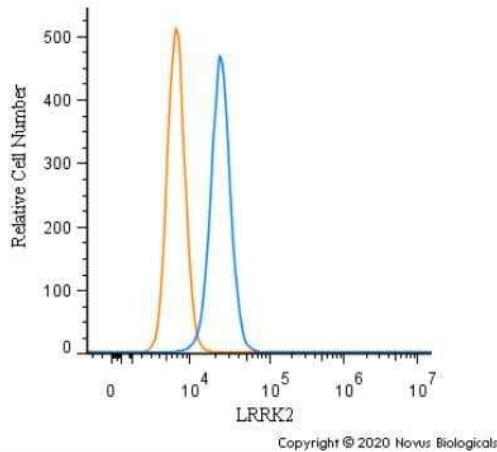


Immunocytochemistry/Immunofluorescence: LRRK2 Antibody TA309736 - HeLa cells were fixed in 4% paraformaldehyde for 10 minutes and permeabilized in 0.05% Triton X-100 in PBS for 5 minutes. The cells were incubated with anti-LRRK2 Antibody TA309736 at 2 ug/ml overnight at 4C and detected with an anti-mouse Dylight 488 (Green) at a 1:1000 dilution for 60 minutes. Nuclei were counterstained with DAPI (Blue). Cells were imaged using a 100X objective and digitally deconvolved.

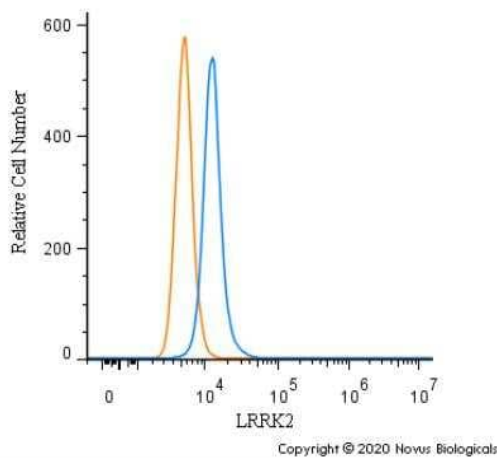
A



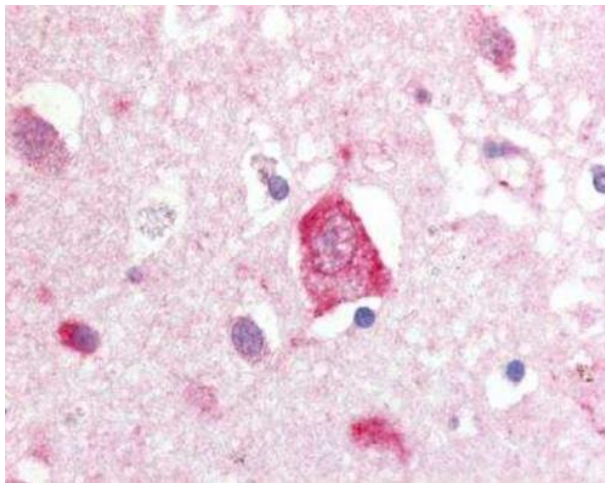
LRRK2 kinase inhibition blocks Tat-induced S935 phosphorylation and inflammatory cytokine expression in BV-2 cells. (A) Western blot depicting pS935-LRRK2 and total LRRK2 protein levels 12 hours after saline or Tat-treatment ± LRRK2 kinase inhibition (LRRK2i).



Flow Cytometry: LRRK2 Antibody TA309736 - An intracellular stain was performed on U2OS cells with LRRK2 Antibody TA309736 (blue) and a matched isotype control (orange). Cells were fixed with 4% PFA and then permeabilized with 0.1% saponin. Cells were incubated in an antibody dilution of 2.5 ug/mL for 30 minutes at room temperature, followed by Rabbit IgG (H+L) Cross-Adsorbed Secondary Antibody, Dylight 550 (SA5-10033, Thermo Fisher).



Flow Cytometry: LRRK2 Antibody TA309736 - An intracellular stain was performed on Neuro2a cells with LRRK2 Antibody TA309736 (blue) and a matched isotype control (orange). Cells were fixed with 4% PFA and then permeabilized with 0.1% saponin. Cells were incubated in an antibody dilution of 2.5 ug/mL for 30 minutes at room temperature, followed by Rabbit IgG (H+L) Cross-Adsorbed Secondary Antibody, Dylight 550 (SA5-10033, Thermo Fisher).



Immunohistochemistry-Paraffin: LRRK2 Antibody TA309736 - Staining of human brain, Putamen, Neurons and Glia using a 60X magnification.