

Product datasheet for **TA309735**

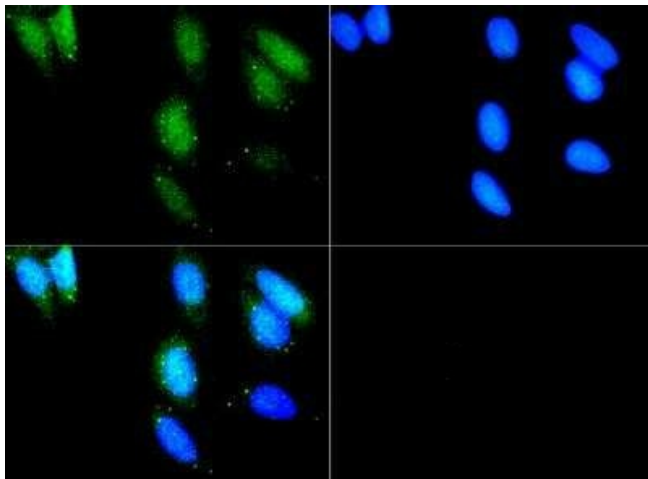
LRRK2 Rabbit Polyclonal Antibody

Product data:

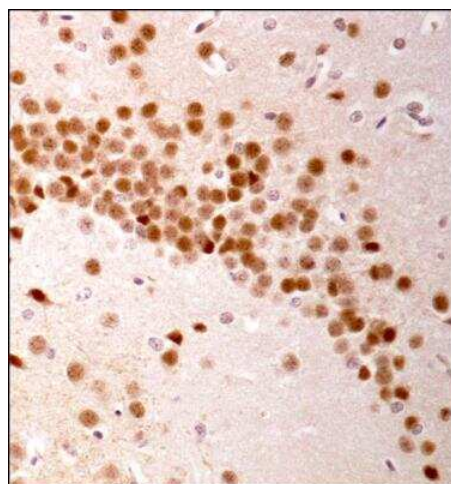
Product Type:	Primary Antibodies
Applications:	ICC/IF, IHC
Recommended Dilution:	Immunohistochemistry: 1:300, Immunocytochemistry/ Immunofluorescence: 1:100, Immunohistochemistry-Paraffin: 1:300
Reactivity:	Human, Mouse
Host:	Rabbit
Clonality:	Polyclonal
Immunogen:	A synthetic peptide made to an internal portion of the human LRRK2 protein (between residues 1-50) [UniProt Q5S007]
Formulation:	PBS, 30% glycerol and 0.05% Sodium Azide
Concentration:	lot specific
Purification:	Affinity purified
Conjugation:	Unconjugated
Storage:	Store at -20°C as received.
Stability:	Stable for 12 months from date of receipt.
Gene Name:	leucine-rich repeat kinase 2
Database Link:	NP_940980 Entrez Gene 66725 Mouse Entrez Gene 120892 Human Q5S007
Synonyms:	AURA17; DARDARIN; PARK8; RIPK7; ROCO2
Protein Families:	Druggable Genome, Protein Kinase
Protein Pathways:	Parkinson's disease



[View online »](#)

Product images:

Immunocytochemistry/Immunofluorescence:
LRRK2 Antibody TA309735 - LRRK2 antibody was tested at 1:100 in U2OS cells with FITC (green). Nuclei were counterstained with DAPI (blue).



Immunohistochemistry: LRRK2 Antibody TA309735 - Analysis of LRRK2 in mouse brain using DAB with hematoxylin counterstain.