

Product datasheet for **TA309732**

Lamin A (LMNA) Mouse Monoclonal Antibody [Clone ID: 12A-2F5]

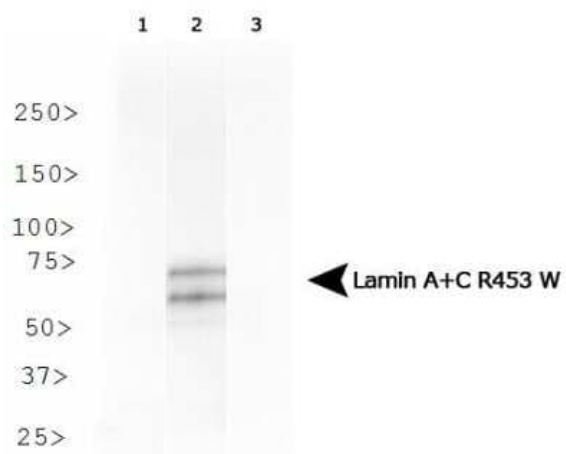
Product data:

Product Type:	Primary Antibodies
Clone Name:	12A-2F5
Applications:	ELISA, ICC/IF, IP, WB
Recommended Dilution:	Western Blot: 1:1000, ELISA: 1:100-1:2000, Immunocytochemistry/ Immunofluorescence: 1:10-1:2000, Immunoprecipitation: 1:10-1:500
Reactivity:	Human
Host:	Mouse
Isotype:	IgG1, kappa
Clonality:	Monoclonal
Immunogen:	Synthetic peptide corresponding to amino acids 449-457 of human Lamin A + C [Accession#: NP_733821.1]
Formulation:	Tris-glycine, 150mM NaCl and 0.05% Sodium Azide
Concentration:	lot specific
Purification:	Protein G purified
Conjugation:	Unconjugated
Storage:	Store at -20°C as received.
Stability:	Stable for 12 months from date of receipt.
Gene Name:	lamin A/C
Database Link:	NP_733821 Entrez Gene 4000 Human P02545
Synonyms:	CDCD1; CDDC; CMD1A; CMT2B1; EMD2; FPL; FPLD; FPLD2; HGPS; IDC; LDP1; LFP; LGMD1B; LMN1; LMNC
Protein Families:	Druggable Genome
Protein Pathways:	Arrhythmogenic right ventricular cardiomyopathy (ARVC), Dilated cardiomyopathy, Hypertrophic cardiomyopathy (HCM)



[View online »](#)

Product images:



Western Blot: Lamin A + C R453W Antibody (12A-2F5) TA309732 - Analysis of Lamin A + C R453W in HeLa cells transfected with Flag-tagged Lamin A 1) wild type, 2) R453W and 3) R482W.