

Product datasheet for **TA309730**

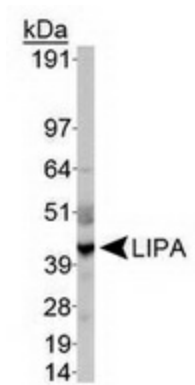
Lysosomal acid lipase (LIPA) Rabbit Polyclonal Antibody

Product data:

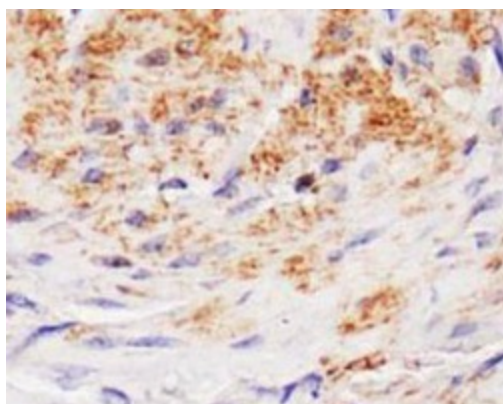
Product Type:	Primary Antibodies
Applications:	IHC, WB
Recommended Dilution:	WB, IF, ICC, IHC
Reactivity:	Human, Mouse
Host:	Rabbit
Clonality:	Polyclonal
Immunogen:	A genomic peptide made to an internal region of the human Lysosomal acid lipase protein (within residues 150-300). [Swiss-Prot P38571]
Formulation:	PBS, 0.02% Sodium Azide
Purification:	Affinity purified
Conjugation:	Unconjugated
Storage:	Store at -20°C as received.
Stability:	Stable for 12 months from date of receipt.
Gene Name:	lipase A, lysosomal acid type
Database Link:	NP_000226 Entrez Gene 16889 Mouse Entrez Gene 3988 Human P38571
Synonyms:	CESD; LAL
Protein Families:	Druggable Genome
Protein Pathways:	Lysosome, Steroid biosynthesis



[View online »](#)

Product images:

Western Blot: Lysosomal acid lipase Antibody - WB detection of LIPA in HepG2 whole cell extract.



Immunohistochemistry: Lysosomal acid lipase Antibody - IHC staining of LIPA in mouse stomach smooth muscle.