

Product datasheet for **TA309727**

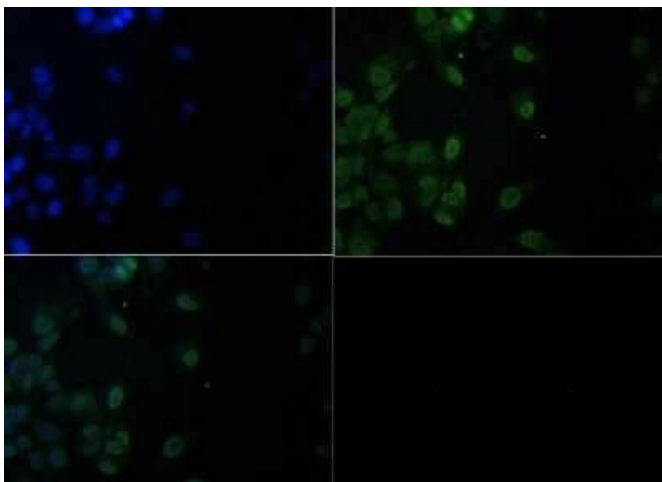
LAMTOR1 Rabbit Polyclonal Antibody

Product data:

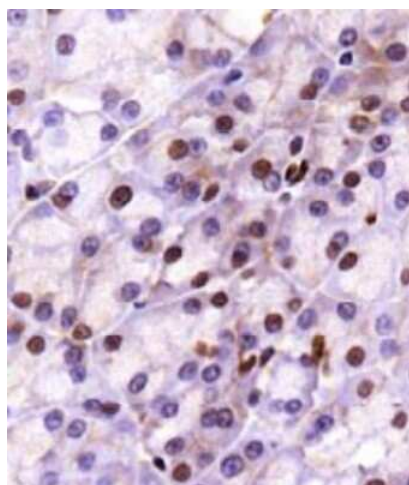
Product Type:	Primary Antibodies
Applications:	ICC/IF, IHC, WB
Recommended Dilution:	Immunohistochemistry: 1:25-1:100, Immunocytochemistry/ Immunofluorescence: 1:25-1:100, Western Blot: 1:1000, Immunohistochemistry-Paraffin: 1:25-1:100
Reactivity:	Bovine, Human, Mouse, Rat
Host:	Rabbit
Clonality:	Polyclonal
Immunogen:	A genomic peptide made to an C-terminal region of the human c11orf59 protein (within residues 50-250). [Swiss-Prot Q6IAA8]
Formulation:	PBS, 0.1% BSA, 50% glycerol and 0.05% Sodium Azide
Concentration:	lot specific
Purification:	Affinity purified
Conjugation:	Unconjugated
Storage:	Store at -20°C as received.
Stability:	Stable for 12 months from date of receipt.
Gene Name:	late endosomal/lysosomal adaptor, MAPK and MTOR activator 1
Database Link:	NP_060377 Entrez Gene 66508 Mouse Entrez Gene 308869 Rat Entrez Gene 55004 Human Q6IAA8
Synonyms:	C11orf59; p18; p27RF-Rho; PDRO; Ragulator1



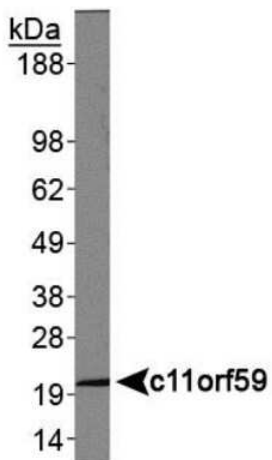
[View online »](#)

Product images:

Immunocytochemistry/Immunofluorescence:
c11orf59/LAMTOR1 Antibody TA309727 -
C11orf59 antibody was tested at 1:50 in HepG2
cells with FITC (green). Nuclei (Blue) were
counterstained with Dapi (blue).



Immunohistochemistry: c11orf59/LAMTOR1
Antibody TA309727 - Analysis of C11orf59 in
mouse pancreas.



Western Blot: c11orf59/LAMTOR1 Antibody
TA309727 - Analysis of c11orf59 in human liver
protein.