

Product datasheet for **TA309722**

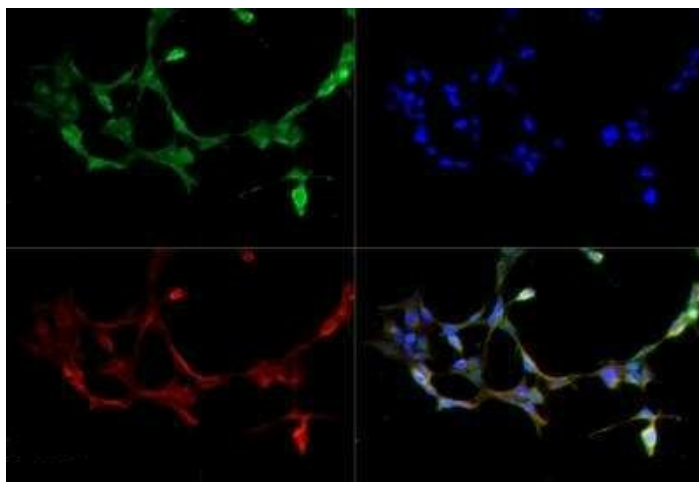
Kallikrein 6 (KLK6) Rabbit Polyclonal Antibody

Product data:

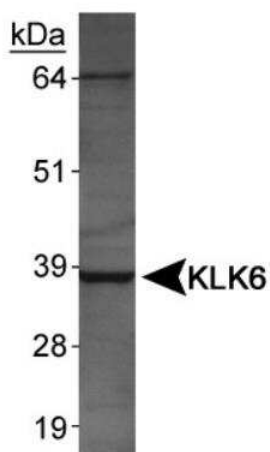
Product Type:	Primary Antibodies
Applications:	ICC/IF, WB
Recommended Dilution:	Immunocytochemistry/ Immunofluorescence: 1:20, Western Blot: 1:1000
Reactivity:	Human
Host:	Rabbit
Clonality:	Polyclonal
Immunogen:	Full length human KLK6 protein [Swiss-Prot# Q92876] expressed in E. coli.
Formulation:	Whole sera and 0.1% Sodium Azide
Purification:	Whole antisera
Conjugation:	Unconjugated
Storage:	Store at -20°C as received.
Stability:	Stable for 12 months from date of receipt.
Gene Name:	kallikrein related peptidase 6
Database Link:	NP_002765 Entrez Gene 5653 Human Q92876
Synonyms:	Bssp; hK6; Klk7; PRSS9; PRSS18; SP59
Protein Families:	Druggable Genome, Protease, Secreted Protein



[View online »](#)

Product images:

Immunocytochemistry/Immunofluorescence:
Kallikrein 6/Neurosin Antibody TA309722 -
Kallikrein 6 antibody was tested in Hek293 cells
with DyLight 488 (green). Nuclei and alpha-
tubulin were counterstained with DAPI (blue) and
Dylight 550 (red).



Western Blot: Kallikrein 6/Neurosin Antibody
TA309722 - Human salivary lysates.