

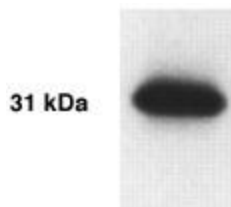
Product datasheet for **TA309719**

Kallikrein 13 (KLK13) Rabbit Polyclonal Antibody

Product data:

Product Type:	Primary Antibodies
Applications:	WB
Recommended Dilution:	WB, IHC, ELISA
Reactivity:	Human
Host:	Rabbit
Isotype:	IgG
Clonality:	Polyclonal
Immunogen:	Residues 262-277 [IRKYETQQKWLKGPQ] of the human KLK-L4 protein.
Formulation:	PBS and 0.02% Sodium Azide
Concentration:	lot specific
Purification:	Affinity purified
Conjugation:	Unconjugated
Storage:	Store at -20°C as received.
Stability:	Stable for 12 months from date of receipt.
Gene Name:	kallikrein related peptidase 13
Database Link:	NP_056411 Entrez Gene 26085 Human Q9UKR3
Synonyms:	KLK-L4; KLKL4
Protein Families:	Druggable Genome, Secreted Protein

Product images:



Western Blot: KLK L4 Antibody - Western Blot analysis of KLK13 (also known as KLK-L4) in LNCap cells using anti-KLK13 at a dilution of 1:1000



[View online »](#)