

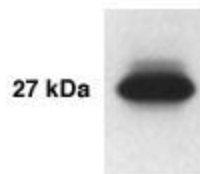
Product datasheet for TA309717

Kallikrein 14 (KLK14) Rabbit Polyclonal Antibody

Product data:

Product Type:	Primary Antibodies
Applications:	WB
Recommended Dilution:	IP, IHC, ELISA
Reactivity:	Human
Host:	Rabbit
Isotype:	IgG
Clonality:	Polyclonal
Immunogen:	Residues 239-251 [KYRSWIEETMRDK] of the human KLK14 protein
Formulation:	PBS and 0.05% Sodium Azide
Purification:	Affinity purified
Conjugation:	Unconjugated
Storage:	Store at -20°C as received.
Stability:	Stable for 12 months from date of receipt.
Gene Name:	kallikrein related peptidase 14
Database Link:	NP_071329 Entrez Gene 43847 Human Q9P0G3
Synonyms:	KLK-L6
Protein Families:	Druggable Genome, Protease, Secreted Protein

Product images:



Western Blot: KLK 14 Antibody - Western Blot detection of KLK14 (also known as KLK-L6) in BT-474 cells using anti-KLK14 at a 1:1000 dilution.



[View online »](#)