

Product datasheet for **TA309714**

Kinesin Heavy Chain 2 (KIF2A) Rabbit Polyclonal Antibody

Product data:

Product Type:	Primary Antibodies
Applications:	ICC/IF, IP, Simple Western, WB
Recommended Dilution:	Immunoprecipitation: 1:10-1:500, Immunocytochemistry/ Immunofluorescence: 1:50 - 1:500, Western Blot: 1:1000, Knockout Validated, Simple Western: 1:1000
Reactivity:	Human, Mammalian, Mouse, Rat
Host:	Rabbit
Clonality:	Polyclonal
Immunogen:	Produced by immunizing rabbits with a recombinant segment of the N-terminal domain of the human protein.
Purification:	Whole antisera
Conjugation:	Unconjugated
Storage:	Store at -20°C as received.
Stability:	Stable for 12 months from date of receipt.
Gene Name:	kinesin heavy chain member 2A
Database Link:	NP_004511 Entrez Gene 16563 Mouse Entrez Gene 84391 Rat Entrez Gene 3796 Human O00139
Synonyms:	CDCBM3; HK2; KIF2
Protein Families:	Druggable Genome

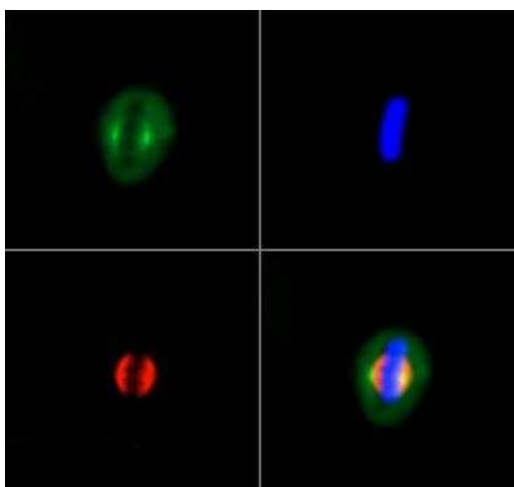


[View online »](#)

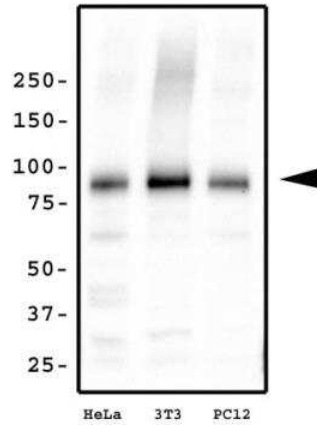
Product images:



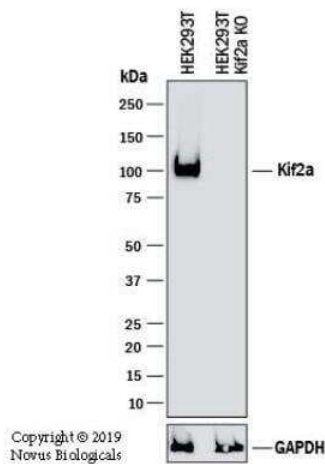
Simple Western: Kif2a Antibody TA309714 - Lane view shows a specific band for Kif2a in 0.5 mg/ml of HeLa lysate. This experiment was performed under reducing conditions using the 12-230 kDa separation system.



Immunocytochemistry/Immunofluorescence: Kif2a Antibody TA309714 - Kif2a antibody was tested in HeLa cells with DyLight 488 (green). Nuclei and alpha-tubulin were counterstained with DAPI (blue) and DyLight 550 (red).



Western Blot: Kif2a Antibody TA309714 - Analysis of Kif2a in HeLa, 3T3 and PC12 lysate.



Knockout Validated: Kif2a Antibody TA309714 - Western blot shows lysates of HEK293T human embryonic kidney parental cell line and Kif2a knockout (KO) HEK293T cell line. PVDF membrane was probed with 1:10000 of Rabbit Anti-Human Kif2a Polyclonal Antibody (Catalog # TA309714) followed by HRP-conjugated Anti-Rabbit IgG Secondary Antibody (Catalog #HAF008). Specific band was detected for Kif2a at approximately 100 kDa (as indicated) in the parental HEK293T cell line, but is not detectable in the knockout HEK293T cell line. This experiment was conducted under reducing conditions.