

Product datasheet for **TA309713**

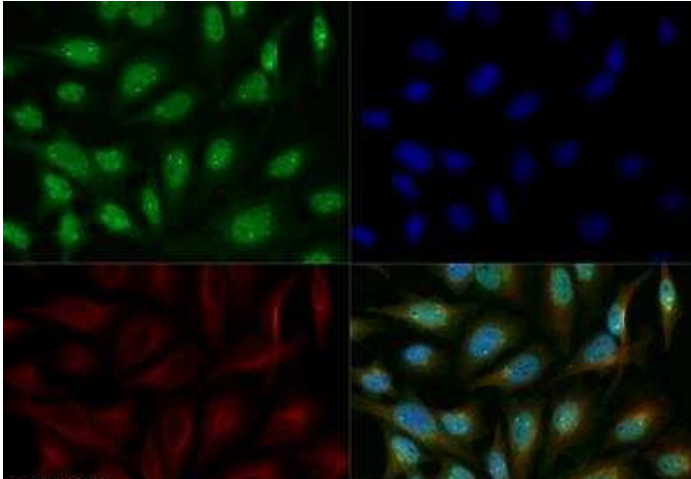
KDM6B Rabbit Polyclonal Antibody

Product data:

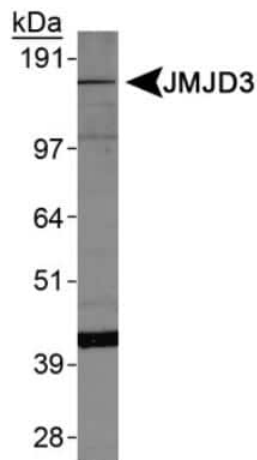
Product Type:	Primary Antibodies
Applications:	FC, ICC/IF, IHC, WB
Recommended Dilution:	Immunohistochemistry, Flow Cytometry, Western Blot: 2 ug/ml, Immunocytochemistry/ Immunofluorescence: 1:100
Reactivity:	Human, Mouse, Rat
Host:	Rabbit
Clonality:	Polyclonal
Immunogen:	Synthetic peptide made to an internal portion of the mouse protein (within residues 600-650). [Swiss-Prot# P22079]
Formulation:	PBS, 30% glycerol and 0.1% Sodium Azide
Concentration:	lot specific
Purification:	Peptide affinity purified
Conjugation:	Unconjugated
Storage:	Store at -20°C as received.
Stability:	Stable for 12 months from date of receipt.
Gene Name:	lysine demethylase 6B
Database Link:	NP_001073893 Entrez Gene 216850 Mouse Entrez Gene 363630 Rat Entrez Gene 23135 Human O15054
Synonyms:	JMJD3



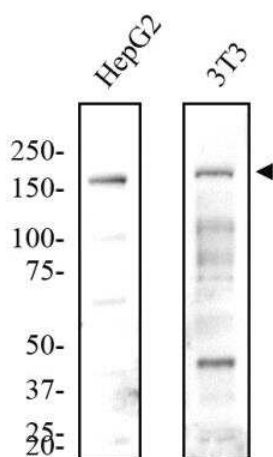
[View online »](#)

Product images:

Immunocytochemistry/Immunofluorescence: Lysine (K)-specific Demethylase 6B/KDM6B/JMJD3 Antibody TA309713 - HeLa cells were fixed for 10 minutes using 10% formalin and then permeabilized for 5 minutes using 1X TBS + 0.5% Triton-X100. The cells were incubated with anti-JMJD3 TA309713 at a 1:200 dilution overnight at 4C and detected with an anti-rabbit Dylight 488 (Green) at a 1:500 dilution. Alpha tubulin (DM1A) [NB100-690] was used as a co-stain at a 1:1000 dilution and detected with an anti-mouse Dylight 550 (Red) at a 1:500 dilution. Nuclei were counterstained with DAPI (Blue). Cells were imaged using a 40X objective.



Western Blot: Lysine (K)-specific Demethylase 6B/KDM6B/JMJD3 Antibody TA309713 - Analysis of JMJD3 expression on HepG2 whole cell lysates.



Western Blot: Lysine (K)-specific Demethylase 6B/KDM6B/JMJD3 Antibody TA309713 - Total protein from human HepG2 and mouse 3T3 cells was separated on a 7.5% gel by SDS-PAGE, transferred to PVDF membrane and blocked in 5% non-fat milk in TBST. The membrane was probed with 2.0 ug/mL anti-JMJD3 in 1% non-fat milk in TBST and detected with an anti-rabbit HRP secondary antibody using chemiluminescence.