

Product datasheet for **TA309712**

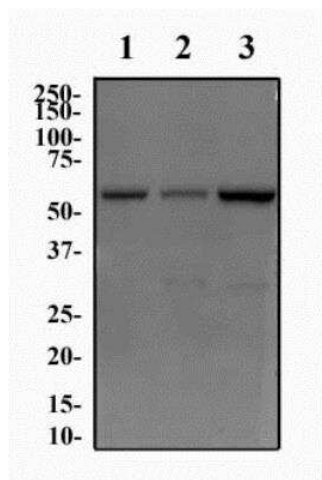
KDM4D Rabbit Polyclonal Antibody

Product data:

Product Type:	Primary Antibodies
Applications:	ChIP
Recommended Dilution:	Chromatin Immunoprecipitation, Chromatin Immunoprecipitation (ChIP)
Reactivity:	Human, Primate
Host:	Rabbit
Clonality:	Polyclonal
Immunogen:	Synthetic peptide made to a C-terminal portion of the human protein (within residues 460-520). [Swiss-Prot# Q6B0I6]
Formulation:	Tris-citrate/phosphate, pH 7-8 and 0.1% Sodium Azide
Concentration:	lot specific
Purification:	Peptide affinity purified
Conjugation:	Unconjugated
Storage:	Store at -20°C as received.
Stability:	Stable for 12 months from date of receipt.
Gene Name:	lysine demethylase 4D
Database Link:	NP_060509 Entrez Gene 55693 Human Q6B0I6
Synonyms:	JMJD2D



[View online »](#)

Product images:

Western Blot: JMJD2D Antibody TA309712 - Western Blot Image of anti-JMJD2D. Whole cell protein from PC3 (lane 1), SHSY5Y (lane 2), and HeLa (lane 3) was separated on a 12% gel by SDS-PAGE, transferred to PVDF membrane and blocked in 5% non-fat milk in TBST. The membrane was probed with 2.0 ug/ml anti-JMJD2D in 1% milk, and detected with an anti-rabbit HRP secondary antibody using chemiluminescence.