

Product datasheet for **TA309710**

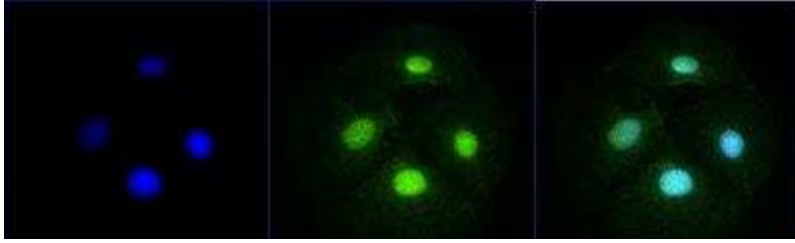
FBXL11 (KDM2A) Rabbit Polyclonal Antibody

Product data:

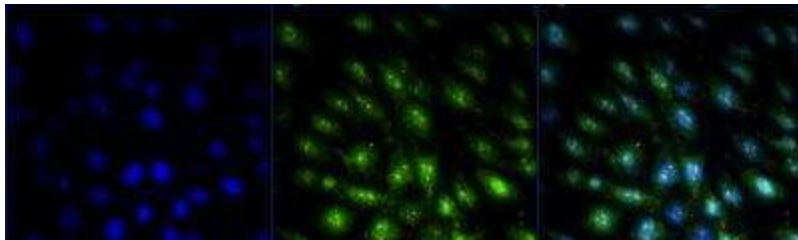
Product Type:	Primary Antibodies
Applications:	ICC/IF, IHC, WB
Recommended Dilution:	Western Blot, Immunohistochemistry: 1:300, Immunocytochemistry/ Immunofluorescence: 1:100-1:400, Immunohistochemistry-Paraffin: 1:300
Reactivity:	Human, Mouse
Host:	Rabbit
Clonality:	Polyclonal
Immunogen:	A synthetic peptide made to an N-terminal portion of the human FBXL11 protein (between residues 350-500) [UniProt Q9Y2K7]
Formulation:	PBS, 30% glycerol and 0.05% Sodium Azide
Purification:	Affinity purified
Conjugation:	Unconjugated
Storage:	Store at -20°C as received.
Stability:	Stable for 12 months from date of receipt.
Gene Name:	lysine demethylase 2A
Database Link:	NP_036440 Entrez Gene 225876 Mouse Entrez Gene 22992 Human Q9Y2K7
Synonyms:	CXXC8; FBL7; FBL11; FBXL11; JHDM1A; LILINA
Protein Families:	Druggable Genome, Transcription Factors



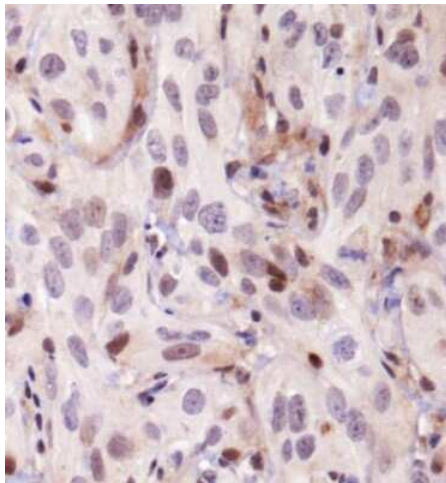
[View online »](#)

Product images:

Immunocytochemistry/Immunofluorescence: KDM2A/FBXL11 Antibody - BSA Free TA309710 - Caco-2 cells were fixed in 4% paraformaldehyde for 10 minutes and permeabilized in 0.05% Triton X-100 in PBS for 5 minutes. The cells were incubated with KDM2A/FBXL11 Antibody (TA309710) at 1ug/ml overnight at 4C and detected with an anti-rabbit DyLight 488 (Green) at a 1:1000 dilution for 60 minutes. Nuclei were counterstained with DAPI (Blue). Cells were imaged using a 40X objective.



Immunocytochemistry/Immunofluorescence: KDM2A/FBXL11 Antibody - BSA Free TA309710 - Mouse MS1 cells were fixed in 4% paraformaldehyde for 10 minutes and permeabilized in 0.05% Triton X-100 in PBS for 5 minutes. The cells were incubated with KCM2A/FBXL11 Antibody (TA309710) at 2ug/ml overnight at 4C and detected with an anti-rabbit DyLight 488 (Green) at a 1:1000 dilution for 60 minutes. Nuclei were counterstained with DAPI (Blue). Cells were imaged using a 100X objective and digitally deconvolved.



Immunohistochemistry: KDM2A/FBXL11 Antibody TA309710 - IHC analysis of KDM2A / FBXL11 in human kidney cancer xenograft using DAB with hematoxylin counterstain.