

Product datasheet for **TA309707**

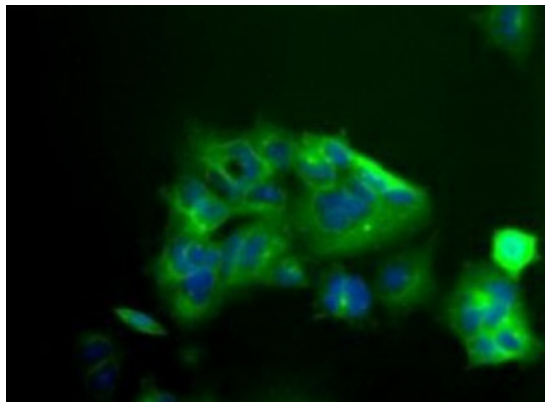
Kv1.2 (KCNA2) Rabbit Polyclonal Antibody

Product data:

| | |
|-----------------------|---|
| Product Type: | Primary Antibodies |
| Applications: | IF |
| Recommended Dilution: | WB, ICC |
| Reactivity: | Bovine, Canine, Human, Mouse, Porcine, Rat, Xenopus, Zebrafish |
| Host: | Rabbit |
| Clonality: | Polyclonal |
| Immunogen: | Synthetic peptide made to a portion of rat Kv1.2 (within residues 50-100). [Swiss-Prot# P63142] |
| Formulation: | PBS and 0.1% Sodium Azide |
| Concentration: | lot specific |
| Purification: | Peptide affinity purified |
| Conjugation: | Unconjugated |
| Storage: | Store at -20°C as received. |
| Stability: | Stable for 12 months from date of receipt. |
| Gene Name: | potassium voltage-gated channel subfamily A member 2 |
| Database Link: | NP_004965 Entrez Gene 16490 Mouse Entrez Gene 25468 Rat Entrez Gene 3737 Human P16389 |
| Synonyms: | EIEE32; HBK5; HK4; HUKIV; KV1.2; MK2; NGK1; RBK2 |
| Protein Families: | Druggable Genome, Ion Channels: Potassium, Transmembrane |



[View online »](#)

Product images:

Immunocytochemistry: Kv1.2 Antibody - Detection of Kv1.2 (Green) in 293 human embryonic kidney cells using anti-Kv 1.2. Nuclei (Blue) are counterstained using Hoechst 33258.