

Product datasheet for **TA309706**

Kv1.2 (KCNA2) Rabbit Polyclonal Antibody

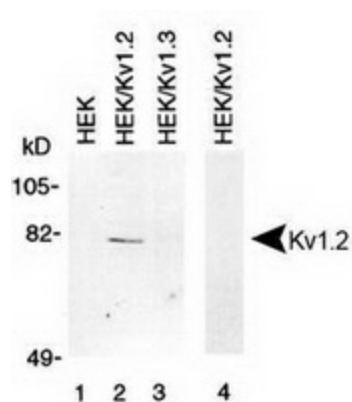
Product data:

Product Type:	Primary Antibodies
Applications:	WB
Recommended Dilution:	WB, IP
Reactivity:	Bovine, Canine, Human, Mouse, Porcine, Rabbit, Rat, Xenopus
Host:	Rabbit
Clonality:	Polyclonal
Immunogen:	Synthetic peptide made to a portion of rat Kv1.2 (within residues 325-375). [Swiss-Prot# P63142]
Formulation:	0.1% Sodium Azide
Purification:	Whole antisera
Conjugation:	Unconjugated
Storage:	Store at -20°C as received.
Stability:	Stable for 12 months from date of receipt.
Gene Name:	potassium voltage-gated channel subfamily A member 2
Database Link:	NP_004965 Entrez Gene 16490 Mouse Entrez Gene 25468 Rat Entrez Gene 3737 Human P16389
Synonyms:	EIEE32; HBK5; HK4; HUKIV; KV1.2; MK2; NGK1; RBK2
Protein Families:	Druggable Genome, Ion Channels: Potassium, Transmembrane



[View online »](#)

Product images:



Western Blot: Kv1.2 Antibody - Membrane preparations from HEK-293 cells untransfected (lane 1), transfected with Kv1.2 (lanes 2 and 4) and transfected with Kv1.3 (lane 3) were subjected to 10% SDS-PAGE and were Western blotted with the Kv1.2 Antibody. Lane 4 was probed with anti-Kv 1.2 that had been preincubated with the peptide used to generate the antibody.