

Product datasheet for **TA309704**

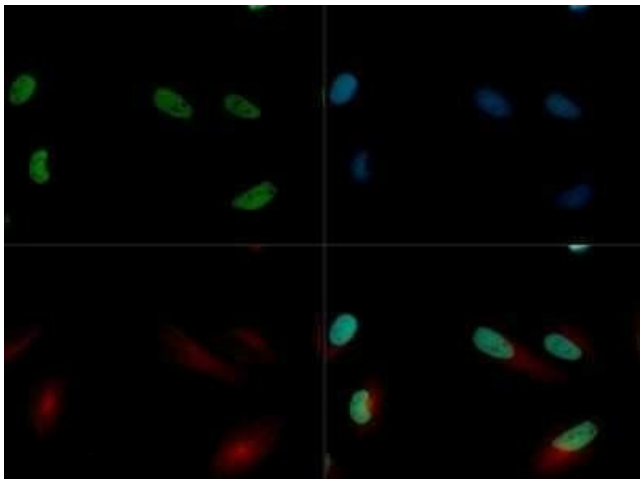
JARID2 Rabbit Polyclonal Antibody

Product data:

Product Type:	Primary Antibodies
Applications:	ChIP, ICC/IF, IHC, IP, Simple Western, WB
Recommended Dilution:	Simple Western: 1:10, Chromatin Immunoprecipitation (ChIP): 1:10-1:500, Immunohistochemistry-Paraffin: 1:200, Immunohistochemistry: 1:200, Immunocytochemistry/ Immunofluorescence: 1:1000, Immunoprecipitation: 1:10-1:500, Chromatin Immunoprecipitation: 1:10-1:500, Knockout Validated, Western Blot: 1:500
Reactivity:	Human, Mouse
Host:	Rabbit
Clonality:	Polyclonal
Immunogen:	A synthetic peptide made to an N-terminal portion of the human jumonji protein sequence (between residues 1-100).
Formulation:	Tris-glycine and 150mM NaCl and 0.05% Sodium Azide
Concentration:	lot specific
Purification:	Immunogen affinity purified
Conjugation:	Unconjugated
Storage:	Store at -20°C as received.
Stability:	Stable for 12 months from date of receipt.
Gene Name:	jumonji and AT-rich interaction domain containing 2
Database Link:	NP_004964 Entrez Gene 16468 Mouse Entrez Gene 3720 Human Q92833
Synonyms:	JMJ
Protein Families:	Transcription Factors



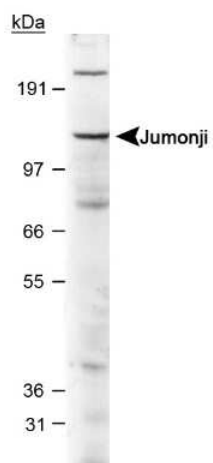
[View online »](#)

Product images:

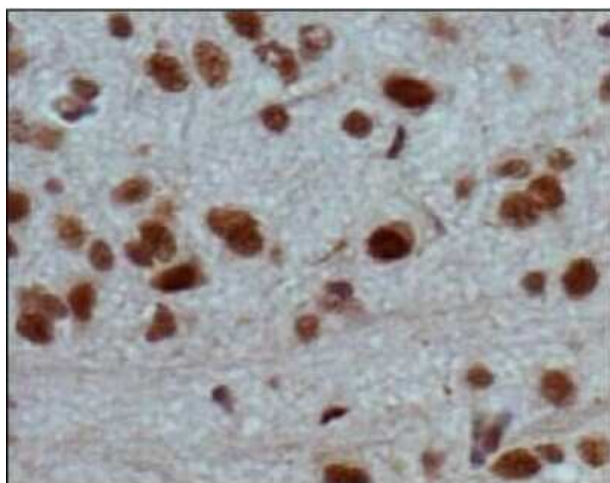
Immunocytochemistry/Immunofluorescence: Jumonji/JARID2 Antibody TA309704 - JARID2 antibody was tested in HeLa cells with Dylight 488 (green). Nuclei and alpha-tubulin were counterstained with DAPI (blue) and Dylight 550 (red).



Simple Western: Jumonji/JARID2 Antibody TA309704 - Simple Western lane view shows a specific band for JARID2 in 0.5 mg/ml of Human Brain lysate. This experiment was performed under reducing conditions using the 12-230 kDa separation system.



Western Blot: Jumonji/JARID2 Antibody TA309704
- Detection of JARID2 protein in E16 mouse brain lysate using 2ug/ml of TA309704.



Immunohistochemistry-Paraffin: Jumonji/JARID2
Antibody TA309704 - Tested in mouse brain using
DAB with hematoxylin counterstain.