

## Product datasheet for **TA309703**

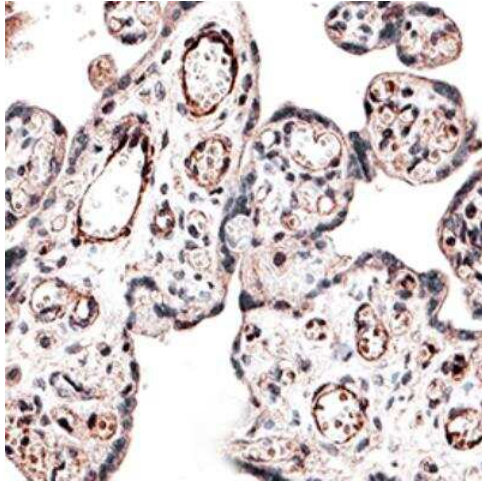
### IREB2 Rabbit Polyclonal Antibody

#### Product data:

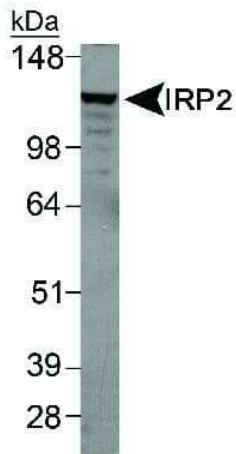
|                       |   |
|-----------------------|---|
| Product Type:         | Primary Antibodies  |
| Applications:         | ICC/IF, IHC, WB   |
| Recommended Dilution: | Immunohistochemistry: 1:200-1:500, Immunocytochemistry/ Immunofluorescence: 1:500, Western Blot: 1:500-1:1000, Immunohistochemistry-Paraffin: 1:200-1:500, Gel Supershift Assay, Gel Super Shift Assays |
| Reactivity:           | Human, Mouse, Primate, Rat  |
| Host:                 | Rabbit  |
| Clonality:            | Polyclonal  |
| Immunogen:            | A synthetic peptide made to an internal portion of the murine IRP2 protein sequence (between residues 100-200). UniProt Q811J3  |
| Formulation:          | Tris-glycine and 150mM NaCl and 0.05% Sodium Azide  |
| Concentration:        | lot specific  |
| Purification:         | Peptide affinity purified   |
| Conjugation:          | Unconjugated  |
| Storage:              | Store at -20°C as received.   |
| Stability:            | Stable for 12 months from date of receipt.  |
| Gene Name:            | iron responsive element binding protein 2   |
| Database Link:        | <a href="#">NP_004127</a><br><a href="#">Entrez Gene 64602 Mouse</a> <a href="#">Entrez Gene 64831 Rat</a> <a href="#">Entrez Gene 3658 Human P48200</a>  |
| Synonyms:             | ACO3; IRP2; IRP2AD  |
| Protein Families:     | Druggable Genome  |



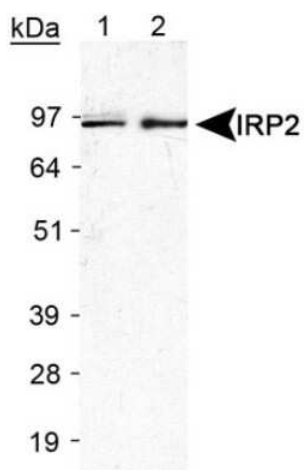
[View online »](#)

**Product images:**

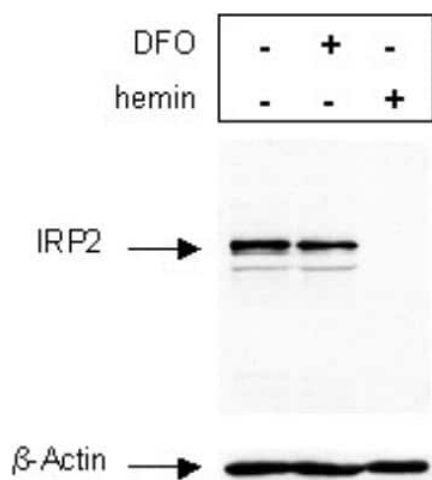
Immunohistochemistry-Paraffin: IRP2 Antibody TA309703 - IHC analysis of a formalin fixed paraffin-embedded (FFPE) human placenta using 1:300 conc. of IRP2 antibody on a Bond Rx autostainer (Leica Biosystems). The assay involved 30 minutes of heat induced antigen retrieval (HIER) using 10mM sodium citrate buffer (pH 9.0) and endogenous peroxidase quenching with peroxide block. The sections were incubated with primary antibody for 15 minutes and Bond Polymer Refine Detection (Leica Biosystems) with DAB was used for signal development followed by counterstaining with hematoxylin. Cytoplasmic staining was observed in villi of endothelial cells.



Western Blot: IRP2 Antibody TA309703 - Detection of IRP2 in mouse liver lysate.



Western Blot: IRP2 Antibody TA309703 - Detection of IRP2 in RAW 264.7 lysate using TA309703. Lane 1: Lot B Lane 2: Lot C



Western Blot: IRP2 Antibody TA309703 - Raw macrophages (mouse) were either left untreated (lane 1) or treated overnight with 100mM DFO (lane 2) or 100mM hemin (lane 3). Proteins extracts were subjected to western blotting using IRP2 or b-actin antibodies diluted 1:500 in TBS-Tween.