

Product datasheet for **TA309698**

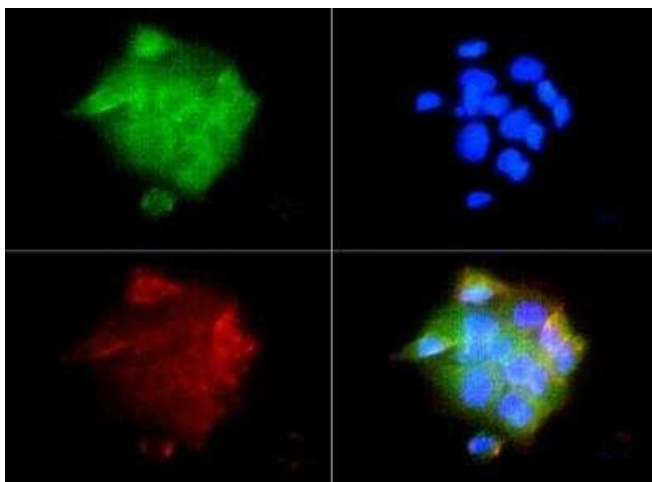
IGF1 Receptor (IGF1R) Rabbit Polyclonal Antibody

Product data:

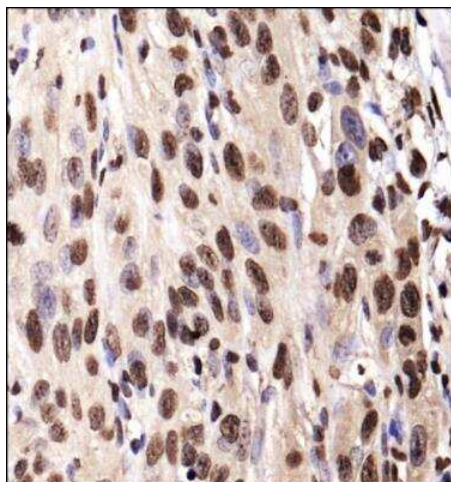
| | |
|-----------------------|---|
| Product Type: | Primary Antibodies |
| Applications: | ICC/IF, IHC, WB |
| Recommended Dilution: | Immunohistochemistry, Immunocytochemistry/ Immunofluorescence: 1:50-1:100, Western Blot: 1 ug/ml, Immunohistochemistry-Paraffin |
| Reactivity: | Human, Mouse, Primate, Rat |
| Host: | Rabbit |
| Clonality: | Polyclonal |
| Immunogen: | A synthetic peptide made to an internal portion of the human IGF1R protein (between residues 700-800) [UniProt P08069] |
| Formulation: | PBS, 30% glycerol and 0.05% Sodium Azide |
| Concentration: | lot specific |
| Purification: | Affinity purified |
| Conjugation: | Unconjugated |
| Storage: | Store at -20°C as received. |
| Stability: | Stable for 12 months from date of receipt. |
| Gene Name: | insulin like growth factor 1 receptor |
| Database Link: | NP_000866 Entrez Gene 16001 Mouse Entrez Gene 25718 Rat Entrez Gene 3480 Human P08069 |
| Synonyms: | CD221; IGFIR; IGFR; JTK13 |
| Protein Families: | Druggable Genome, Protein Kinase, Transmembrane |
| Protein Pathways: | Adherens junction, Colorectal cancer, Endocytosis, Focal adhesion, Glioma, Long-term depression, Melanoma, Oocyte meiosis, Pathways in cancer, Progesterone-mediated oocyte maturation, Prostate cancer |



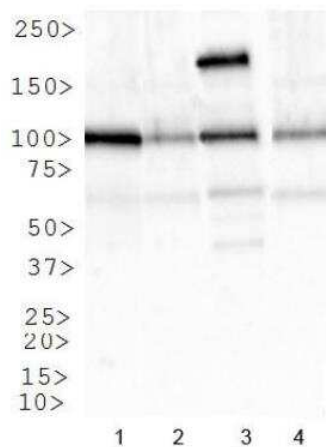
[View online »](#)

Product images:


Immunocytochemistry/Immunofluorescence: IGF-I R Antibody TA309698 - IGF1 receptor (EC) antibody was tested in A431 cells with FITC (green). Nuclei and actin were counterstained with Dapi (blue) and Phalloidin (red).



Immunohistochemistry-Paraffin: IGF-I R Antibody TA309698 - IHC analysis of a formalin fixed paraffin embedded tissue section of the human kidney cancer xenograft using 1:200 dilution of IGF-I R antibody (TA309698). The signal was developed using HRP-DAB method which followed counterstaining of the cells with hematoxylin.



Western Blot: IGF-I R Antibody TA309698 - Analysis of IGFR1 in: 1. HeLa, 2. NIH/3T3, 3. SK-BR-3 and 4. COS7.