

Product datasheet for **TA309692**

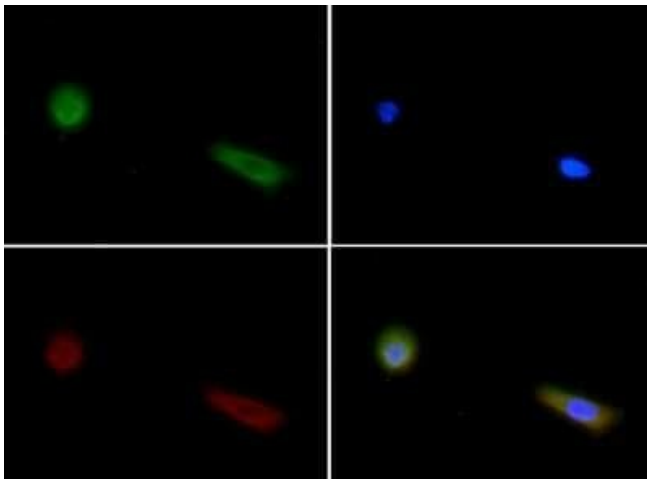
HIF1AN Mouse Monoclonal Antibody [Clone ID: 162c]

Product data:

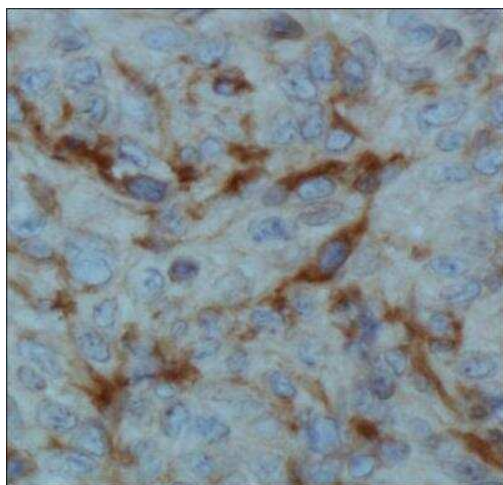
Product Type:	Primary Antibodies
Clone Name:	162c
Applications:	ICC/IF, IHC, WB
Recommended Dilution:	Immunohistochemistry: 1:400, Immunocytochemistry/ Immunofluorescence: 1:25, Western Blot: 5 ug/ml, Immunohistochemistry-Paraffin: 1:400
Reactivity:	Human
Host:	Mouse
Isotype:	IgG1
Clonality:	Monoclonal
Immunogen:	Full length human Factor Inhibiting HIF-1 protein expressed in E.coli BL21 (DE3) cells. [Swiss-Prot# Q9NWT6]
Formulation:	Tris-glycine, 150mM NaCl pH 7.5 and 0.05% Sodium Azide
Concentration:	lot specific
Purification:	Protein G purified
Conjugation:	Unconjugated
Storage:	Store at -20°C as received.
Stability:	Stable for 12 months from date of receipt.
Gene Name:	hypoxia inducible factor 1 alpha subunit inhibitor
Database Link:	NP_060372 Entrez Gene 55662 Human Q9NWT6
Synonyms:	FIH1
Protein Families:	Druggable Genome



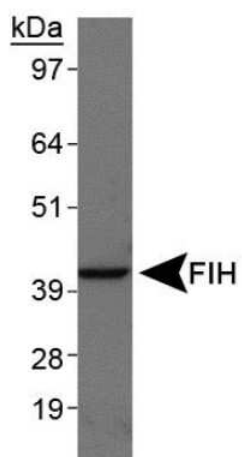
[View online »](#)

Product images:

Immunocytochemistry/Immunofluorescence: Factor Inhibiting HIF-1 Antibody (162c) TA309692 - FIH (162C) antibody was tested in A431 cells with FITC (green). Nuclei and alpha-tubulin were counterstained with Dapi (blue) and Dylight 550 (red).



Immunohistochemistry: Factor Inhibiting HIF-1 Antibody (162c) TA309692 - Analysis of FIH in human renal cancer using DAB with hematoxylin counterstain.



Western Blot: Factor Inhibiting HIF-1 Antibody (162c) TA309692 - Analysis in A431 cell lysates using TA309692.