

## Product datasheet for **TA309686**

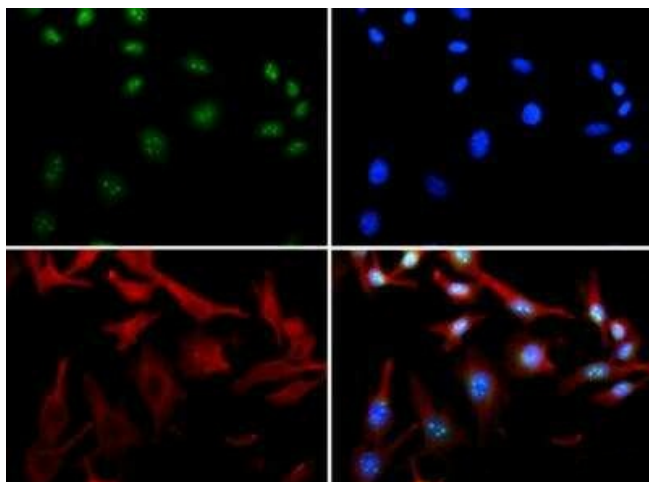
### HDAC6 Rabbit Polyclonal Antibody

#### Product data:

Product Type:	Primary Antibodies
Applications:	FC, ICC/IF, IHC, WB
Recommended Dilution:	Immunohistochemistry (Negative), Flow Cytometry, Immunocytochemistry/ Immunofluorescence: 1:100, Western Blot (Negative)
Reactivity:	Human
Host:	Rabbit
Clonality:	Polyclonal
Immunogen:	A synthetic peptide made to a C-terminal portion of the human HDAC6 protein (between residues 1175-1215) [UniProt Q9UBN7]
Formulation:	PBS, 30% glycerol and 0.05% Sodium Azide
Concentration:	lot specific
Purification:	Affinity purified
Conjugation:	Unconjugated
Storage:	Store at -20°C as received.
Stability:	Stable for 12 months from date of receipt.
Gene Name:	histone deacetylase 6
Database Link:	<a href="#">NP_006035</a> <a href="#">Entrez Gene 10013 Human</a> <a href="#">Q9UBN7</a>
Synonyms:	CPBHM; HD6; JM21; PPP1R90
Protein Families:	Druggable Genome, Transcription Factors



[View online »](#)

**Product images:**

Immunocytochemistry/Immunofluorescence:  
HDAC6 Antibody TA309686 - HDAC-6 antibody  
was tested in HeLa cells with FITC (green). Nuclei  
and alpha-tubulin were counterstained with DAPI  
(blue) and DyLight 550 (red).