

Product datasheet for **TA309676**

Glutaredoxin 1 (GLRX) Rabbit Polyclonal Antibody

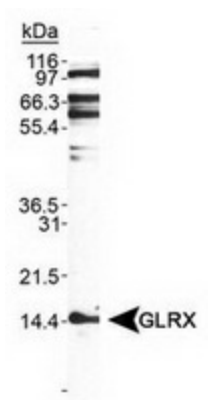
Product data:

Product Type:	Primary Antibodies
Applications:	WB
Recommended Dilution:	WB
Reactivity:	Human
Host:	Rabbit
Clonality:	Polyclonal
Immunogen:	Synthetic peptide made to an internal portion of the human protein (within residues 40-100). [Swiss-Prot# P35754]
Formulation:	Tris-citrate/phosphate, pH 7-8 and 0.1% Sodium Azide
Concentration:	lot specific
Purification:	Immunogen affinity purified
Conjugation:	Unconjugated
Storage:	Store at -20°C as received.
Stability:	Stable for 12 months from date of receipt.
Gene Name:	glutaredoxin
Database Link:	NP_002055 Entrez Gene 2745 Human P35754
Synonyms:	GRX; GRX1
Protein Families:	Druggable Genome



[View online »](#)

Product images:



Detection of GLRX in Jurkat whole cell lysate using anti-GLRX.