

Product datasheet for **TA309675**

GLO1 Mouse Monoclonal Antibody [Clone ID: Glo1a]

Product data:

Product Type:	Primary Antibodies
Clone Name:	Glo1a
Applications:	ELISA, ICC/IF, IHC, IP, Simple Western, WB
Recommended Dilution:	Immunohistochemistry-Paraffin, Immunoprecipitation, Western Blot, Simple Western: 1:50, ELISA: 0.15 ng / 1 ug protein, Immunocytochemistry/ Immunofluorescence: 10 ug/ml
Reactivity:	Human
Host:	Mouse
Isotype:	IgG1, kappa
Clonality:	Monoclonal
Immunogen:	Full length human GLO1-GST fusion protein [Swiss-Prot #Q04760].
Formulation:	Tris-glycine, 150mM NaCl and 0.05% Sodium Azide
Concentration:	lot specific
Purification:	Protein G purified
Conjugation:	Unconjugated
Storage:	Store at -20°C as received.
Stability:	Stable for 12 months from date of receipt.
Gene Name:	glyoxalase I
Database Link:	NP_006699 Entrez Gene 2739 Human Q04760
Synonyms:	GLOD1; GLYI; HEL-S-74
Protein Pathways:	Pyruvate metabolism



[View online »](#)

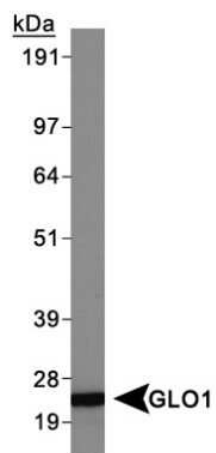
Product images:



Simple Western: Glyoxalase I Antibody (Glo1a) TA309675 - Simple Western lane view shows a specific band detected for GLO1 in HeLa lysate. This experiment was performed under reducing conditions using the Wes or Sally Sue separation system 12-230kDa (or 66-440kDa).



Simple Western: Glyoxalase I Antibody (Glo1a) TA309675 - Simple Western lane view shows a specific band for GLO1 in 0.5 mg/ml of HeLa lysate. This experiment was performed under reducing conditions using the 12-230kDa separation system. * Non-specific interaction with the 230 kDa Simple Western standard may be seen with this antibody.



Western Blot: Glyoxalase I Antibody (Glo1a)
TA309675 - HeLa whole cell extracts.