

Product datasheet for **TA309674**

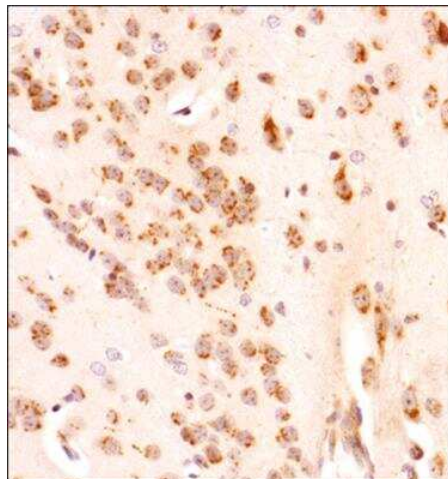
GLI1 Rabbit Polyclonal Antibody

Product data:

Product Type:	Primary Antibodies
Applications:	ChIP, ELISA, FC, ICC/IF, IHC, Immunoblotting, WB
Recommended Dilution:	Knockdown Validated, Immunocytochemistry/ Immunofluorescence: 1 ug/ml, ELISA: 1:500 - 1:2000, Chromatin Immunoprecipitation (ChIP): 1:10-1:500, Western Blot: 1 - 2 ug/ml, Immunohistochemistry: 1:200, Immunohistochemistry-Paraffin: 1:200, Flow (Intracellular): 1-2 ug/million cells, Immunoblotting: 1 - 2 ug/ml
Reactivity:	Human, Mouse
Host:	Rabbit
Clonality:	Polyclonal
Immunogen:	A synthetic peptide made toward the C-terminus portion of the human Gli1 protein (between residues 800-850) [UniProt P08151]
Formulation:	PBS, 30% glycerol and 0.01% Sodium Azide
Concentration:	lot specific
Purification:	Affinity purified
Conjugation:	Unconjugated
Storage:	Store at -20°C as received.
Stability:	Stable for 12 months from date of receipt.
Gene Name:	GLI family zinc finger 1
Database Link:	NP_005260 Entrez Gene 14632 Mouse Entrez Gene 2735 Human P08151
Synonyms:	GLI
Protein Families:	Adult stem cells, Cancer stem cells, Druggable Genome, Embryonic stem cells, ES Cell Differentiation/IPS, Stem cell relevant signaling - DSL/Notch pathway, Transcription Factors
Protein Pathways:	Basal cell carcinoma, Hedgehog signaling pathway, Pathways in cancer



[View online »](#)

Product images:

Immunohistochemistry-Paraffin: GLI-1 Antibody TA309674 - Analysis of a FFPE mouse brain section using GLI-1 antibody at 1:600 dilution.