

## Product datasheet for **TA309673**

### GLI1 Rabbit Polyclonal Antibody

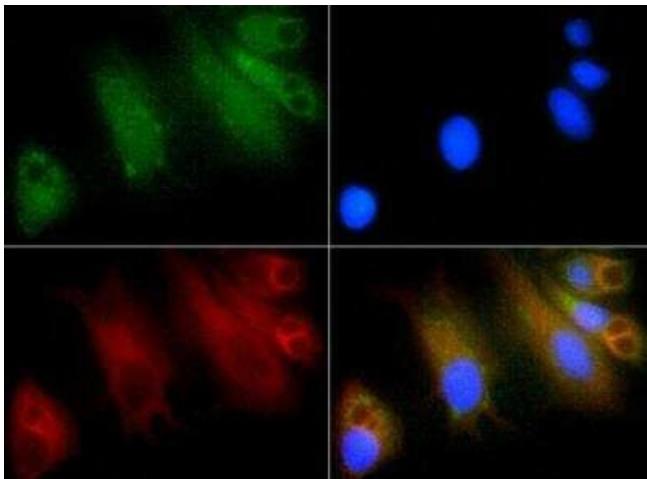
#### Product data:

Product Type:	Primary Antibodies
Applications:	ICC/IF, IHC, WB
Recommended Dilution:	Immunohistochemistry-Frozen, In-situ Hybridization, Western Blot: 1:1000, Immunohistochemistry-Paraffin: 1:400, Immunohistochemistry: 1:200, Immunocytochemistry/ Immunofluorescence: 1:200
Reactivity:	Human, Mouse
Host:	Rabbit
Clonality:	Polyclonal
Immunogen:	A synthetic peptide made to an internal portion of the human Gli1 protein (between residues 150-200) [UniProt P08151]
Formulation:	PBS, 30% glycerol and 0.05% Sodium Azide
Purification:	Affinity purified
Conjugation:	Unconjugated
Storage:	Store at -20°C as received.
Stability:	Stable for 12 months from date of receipt.
Gene Name:	GLI family zinc finger 1
Database Link:	<a href="#">NP_005260</a> <a href="#">Entrez Gene 14632 Mouse</a> <a href="#">Entrez Gene 2735 Human</a> <a href="#">P08151</a>
Synonyms:	GLI
Protein Families:	Adult stem cells, Cancer stem cells, Druggable Genome, Embryonic stem cells, ES Cell Differentiation/IPS, Stem cell relevant signaling - DSL/Notch pathway, Transcription Factors
Protein Pathways:	Basal cell carcinoma, Hedgehog signaling pathway, Pathways in cancer

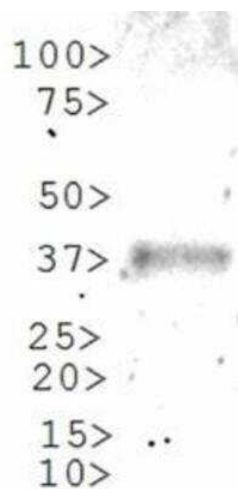


[View online »](#)

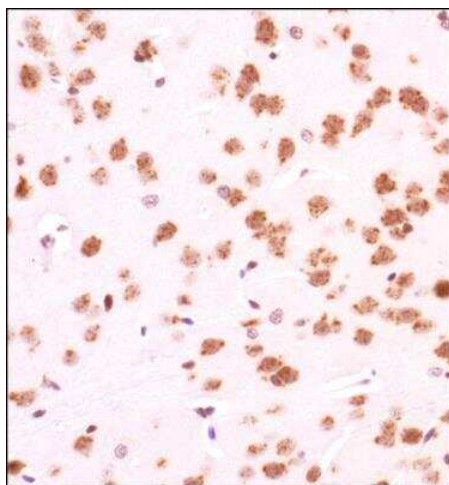
**Product images:**



Immunocytochemistry/Immunofluorescence: GLI-1 Antibody TA309673 - GLI1 antibody was tested in HepG2 cells with FITC (green). Nuclei and actin were counterstained with DAPI (blue) and Phalloidin (red).



Western Blot: GLI-1 Antibody TA309673 - Analysis of GLI-1 on partial recombinant GLI-1 protein (molecular weight of partial recombinant protein is 37 kDa).



Immunohistochemistry: GLI-1 Antibody TA309673  
- Analysis of GLI-1 in mouse brain using DAB with  
hematoxylin counterstain.