

Product datasheet for **TA309672**

Gliomedin (GLDN) Rabbit Polyclonal Antibody

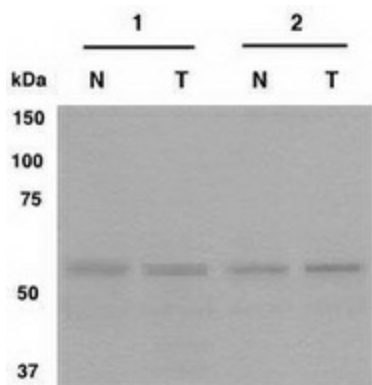
Product data:

Product Type:	Primary Antibodies
Applications:	WB
Recommended Dilution:	WB
Reactivity:	Human
Host:	Rabbit
Clonality:	Polyclonal
Immunogen:	A synthetic peptide made to residues 160-176 of human CRG-L2.
Formulation:	PBS and 0.02% Sodium Azide
Concentration:	lot specific
Purification:	IgG purified
Conjugation:	Unconjugated
Storage:	Store at -20°C as received.
Stability:	Stable for 12 months from date of receipt.
Gene Name:	gliomedin
Database Link:	NP_861454 Entrez Gene 342035 Human Q6ZMI3
Synonyms:	CLOM; COLM; CRG-L2; CRGL2; UNC-112
Protein Families:	Transmembrane



[View online »](#)

Product images:



Western Blot and Immunoprecipitation: CRG-L2 Antibody - Detection of human CRG-L2 in patient 1 and patient 2 (N = normal adjacent liver sample, T = tumor liver sample) using anti-CRG-L2 at a 1:1,000 dilution.