

Product datasheet for **TA309666**

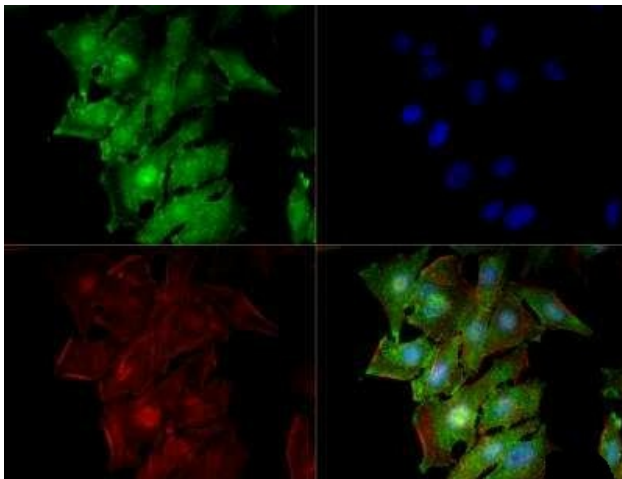
FXR2 Mouse Monoclonal Antibody [Clone ID: 1G2]

Product data:

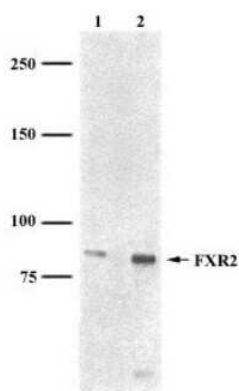
Product Type:	Primary Antibodies
Clone Name:	1G2
Applications:	ICC/IF, IHC, WB
Recommended Dilution:	Immunohistochemistry-Paraffin: 20 ug/ml, Immunohistochemistry: 20 ug/ml, Western Blot: 1:500-1:2500, Immunocytochemistry/ Immunofluorescence: 1:100-1:200
Reactivity:	Human, Mouse
Host:	Mouse
Isotype:	IgG1, kappa
Clonality:	Monoclonal
Immunogen:	Recombinant C-terminal fragment of human FXR2 (residues 414-658).
Formulation:	PBS with 0.01% Sodium Azide
Concentration:	lot specific
Purification:	Protein G purified
Conjugation:	Unconjugated
Storage:	Store at -20°C as received.
Stability:	Stable for 12 months from date of receipt.
Gene Name:	FMR1 autosomal homolog 2
Database Link:	NP_004851 Entrez Gene 23879 Mouse Entrez Gene 9513 Human P51116
Synonyms:	FMR1L2; FXR2P



[View online »](#)

Product images:

Immunocytochemistry/Immunofluorescence: FXR2 Antibody (1G2) TA309666 - FXR2 (1G2) antibody was tested in HeLa cells with DyLight 488 (green). Nuclei and alpha-tubulin were counterstained with DAPI (blue) and DyLight 550 (red).



FXR2 detected in HeLa whole cell lysate using NB 300-259. Lane 1 - 1:2,500. Lane 2: 1:500.

Western Blot: FXR2 Antibody (1G2) TA309666 - Whole cell HeLa lysate at a concentration of 1:2500 (lane 1) and 1:500 (lane 2).