

Product datasheet for **TA309665**

FUT4 Mouse Monoclonal Antibody [Clone ID: MC-480]

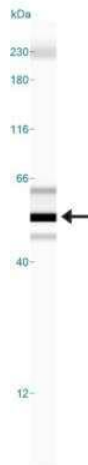
Product data:

Product Type:	Primary Antibodies
Clone Name:	MC-480
Applications:	FC, ICC/IF, IHC, Simple Western, WB
Recommended Dilution:	Western Blot: 2 ug/ml, Immunohistochemistry-Paraffin: 1:50-1:200, Immunohistochemistry-Frozen: 1:50-1:200, Simple Western: 1:10, Immunohistochemistry: 1:50-1:200, Immunocytochemistry/ Immunofluorescence: 1:50-1:200, Flow Cytometry: 2.5 ug/million cells
Reactivity:	Human, Mouse
Host:	Mouse
Isotype:	IgM
Clonality:	Monoclonal
Immunogen:	F9 tetracarcinoma stem cells (X-irradiated).
Formulation:	Tris-glycine, 150mM NaCl and 0.05% Sodium Azide
Purification:	IgM purified
Conjugation:	Unconjugated
Storage:	Store at -20°C as received.
Stability:	Stable for 12 months from date of receipt.
Gene Name:	fucosyltransferase 4
Database Link:	NP_002024 Entrez Gene 14345 Mouse Entrez Gene 2526 Human P22083
Synonyms:	CD15; ELFT; FCT3A; FUC-TIV; FUTIV; LeX; SSEA-1
Protein Families:	Transmembrane
Protein Pathways:	Glycosphingolipid biosynthesis - lacto and neolacto series, Metabolic pathways

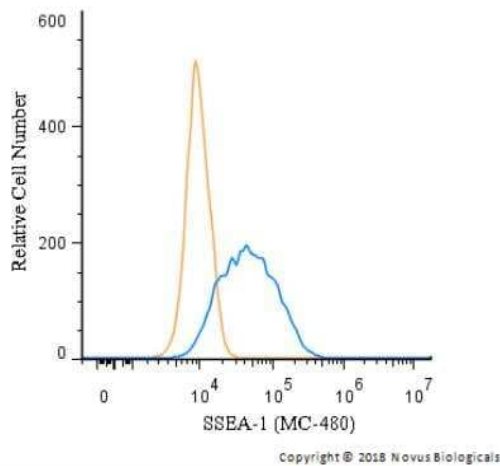


[View online »](#)

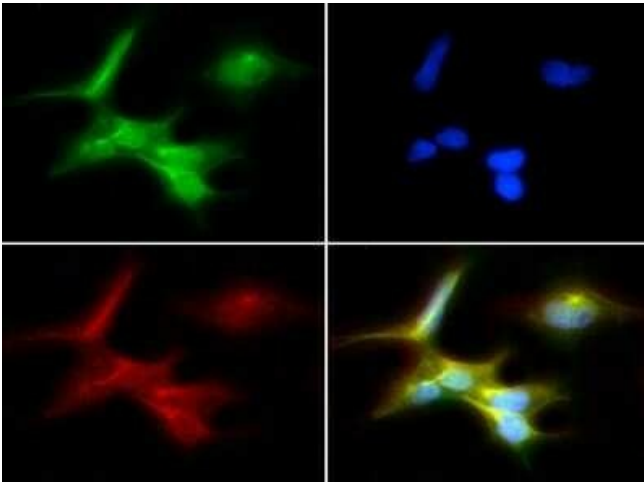
Product images:



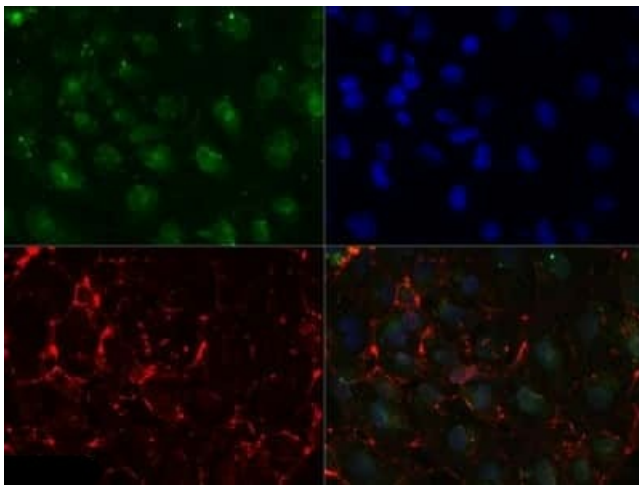
Simple Western: SSEA-1 Antibody (MC-480) TA309665 - Simple Western lane view shows a specific band for SSEA1 in 0.5 mg/ml of Human Brain lysate. This experiment was performed under reducing conditions using the 12-230 kDa separation system.



Flow Cytometry: SSEA-1 Antibody (MC-480) TA309665 - An intracellular stain was performed on Jurkat cells with SSEA-1 Antibody (MC-480)TA309665 (blue) and a matched isotype control (orange). Cells were fixed with 4% PFA and then permeabilized with 0.1% saponin. Cells were incubated in an antibody dilution of 5 ug/mL for 30 minutes at room temperature, followed by mouse IgM Alexa Fluor 488-conjugated secondary antibody.



Immunocytochemistry/Immunofluorescence:
SSEA-1 Antibody (MC-480) TA309665 - SSEA1 antibody was tested in Ntera-2 cells with FITC (green). Nuclei and alpha-tubulin were counterstained with Dapi (blue) and Dylight 550 (red).



Immunocytochemistry/Immunofluorescence:
SSEA-1 Antibody (MC-480) TA309665 - SSEA1 antibody (0.1ug/ml) was tested in Ntera2 cells with Dylight 488 (green). Nuclei and alpha-tubulin were counterstained with DAPI (blue) and Dylight 550 (red). Image objective 40x.