

## Product datasheet for **TA309661**

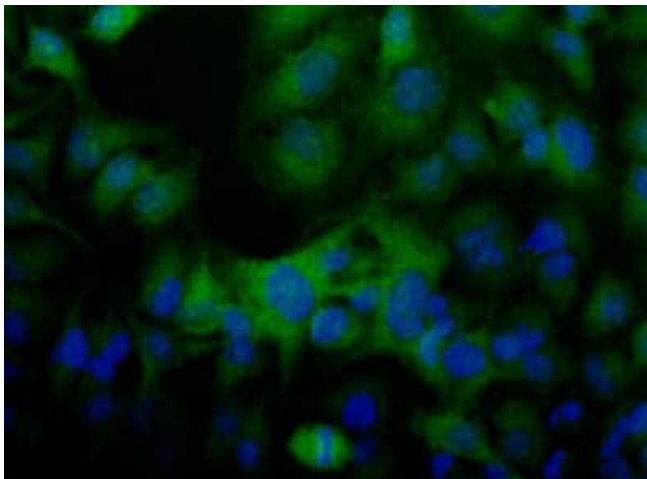
### FLCN Rabbit Polyclonal Antibody

#### Product data:

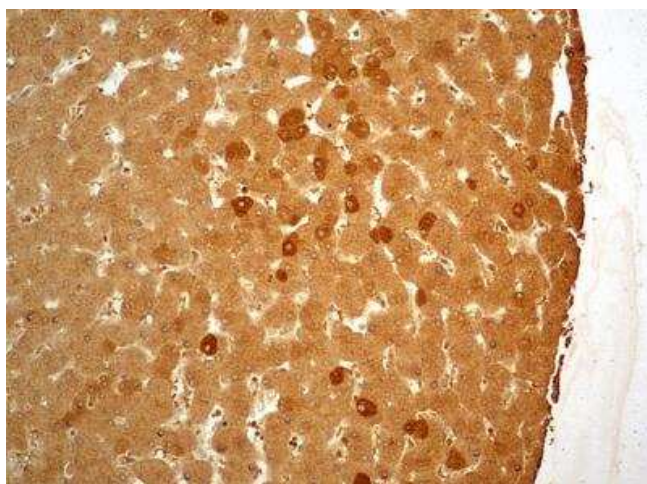
Product Type:	Primary Antibodies
Applications:	ICC/IF, IHC, WB
Recommended Dilution:	Immunocytochemistry/ Immunofluorescence: 1:100, Western Blot: 1:1000, Immunohistochemistry: 1:50-1:200, Immunohistochemistry-Paraffin: 1:50-1:200
Reactivity:	Bovine, Canine, Human, Mouse, Rat
Host:	Rabbit
Clonality:	Polyclonal
Immunogen:	N-terminal partial recombinant human FLCN protein [Swiss-Prot# Q8NFG4] expressed in E. coli.
Formulation:	Whole antisera and 0.1% Sodium Azide
Concentration:	lot specific
Purification:	Whole antisera
Conjugation:	Unconjugated
Storage:	Store at -20°C as received.
Stability:	Stable for 12 months from date of receipt.
Gene Name:	folliculin
Database Link:	<a href="#">NP_653207</a> <a href="#">Entrez Gene 216805 Mouse</a> <a href="#">Entrez Gene 303185 Rat</a> <a href="#">Entrez Gene 201163 Human Q8NFG4</a>
Synonyms:	BHD; FLCL
Protein Families:	Druggable Genome
Protein Pathways:	Renal cell carcinoma



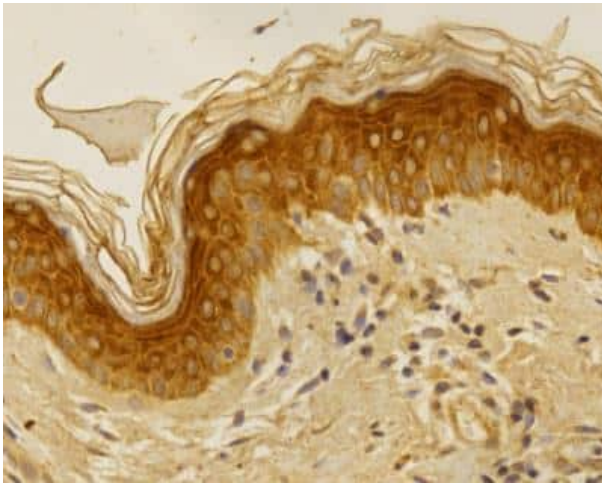
[View online »](#)

**Product images:**

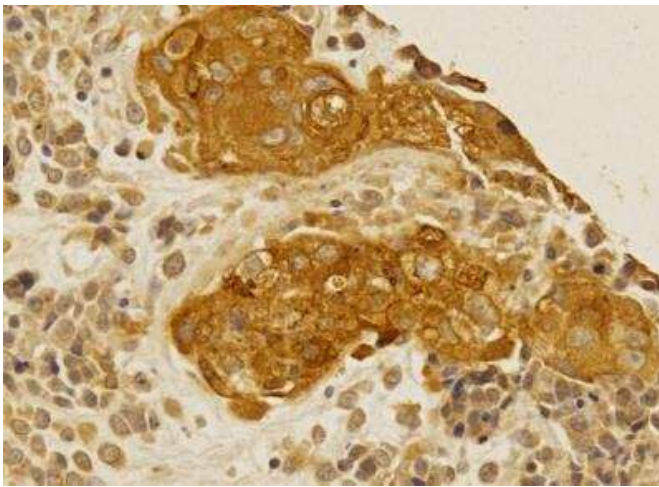
Immunocytochemistry/Immunofluorescence: Folliculin Antibody TA309661 - Detection of FLCN (Green) in HeLa cells using TA309661. Nuclei (Blue) are counterstained using Hoechst 33258



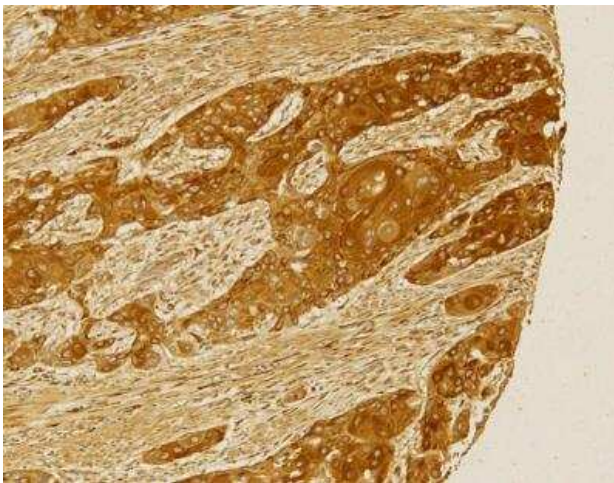
Immunohistochemistry-Paraffin: Folliculin Antibody TA309661 - IHC analysis of formalin-fixed paraffin-embedded tissue section of normal liver of human using rabbit polyclonal Folliculin antibody (TA309661) at 5 ug/ml concentration. Strong cytoplasmic-nuclear immunopositivity of Folliculin protein was observed in hepatocytes [Magnification 10X].



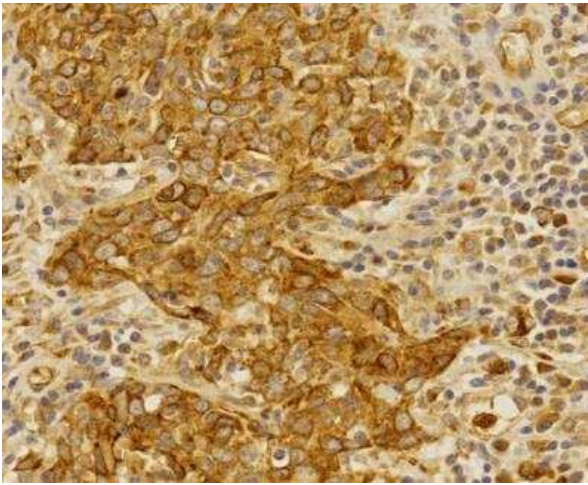
Immunohistochemistry-Paraffin: Folliculin Antibody TA309661 - IHC analysis of formalin-fixed paraffin-embedded tissue section of normal skin from human using rabbit polyclonal Folliculin antibody (TA309661) at 5 ug/ml concentration. Intense cytoplasmic with moderate nuclear immunostaining of Folliculin protein was observed in the various cells of the epidermal layer [Magnification 40X].



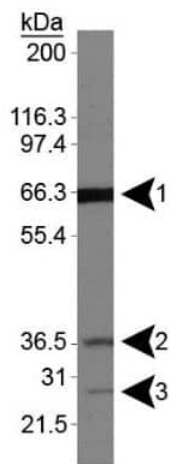
Immunohistochemistry-Paraffin: Folliculin Antibody TA309661 - IHC analysis of formalin-fixed paraffin-embedded tissue section of human bladder cancer using rabbit polyclonal Folliculin antibody (TA309661) at 5 ug/ml concentration. The carcinoma cells as well as the various stromal cells depicted cytoplasmic- nuclear immunostaining for Folliculin protein. The cytoplasmic staining was more intense in the carcinoma cells compared to tumor stroma [Magnification 40X]



Immunohistochemistry-Paraffin: Folliculin Antibody TA309661 - IHC analysis of formalin-fixed paraffin-embedded tissue section of human esophageal squamous cell carcinoma (SCC) using rabbit polyclonal Folliculin antibody (TA309661) at 5 ug/ml concentration. The SCC cells as well as the associated stromal cells depicted strong cytoplasmic-nuclear immunostaining of Folliculin protein. The staining was more intense in the carcinoma cells compared to the tumor stroma [Magnification 10X]



Immunohistochemistry-Paraffin: Folliculin Antibody TA309661 - IHC analysis of formalin-fixed paraffin-embedded tissue section of human pulmonary squamous cell carcinoma using rabbit polyclonal Folliculin antibody (TA309661) at 5 ug/ml concentration. Cytoplasmic-nuclear immunostaining of Folliculin protein was observed in the various cells and interestingly, the staining was intense and localized more towards the cell membranes in a bunch of cells having mesenchymal morphology. [Magnification 40X]



Western Blot: Folliculin Antibody TA309661 - Analysis of FLCN isoforms 1, 2 and 3 on HeLa whole cell lysate