

Product datasheet for **TA309658**

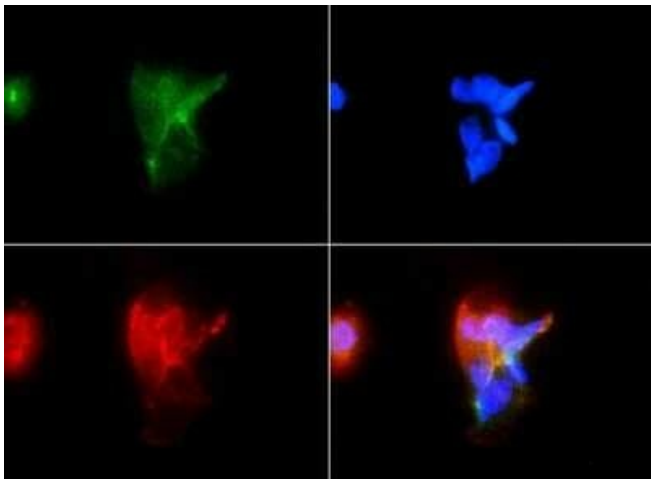
FAT4 Rabbit Polyclonal Antibody

Product data:

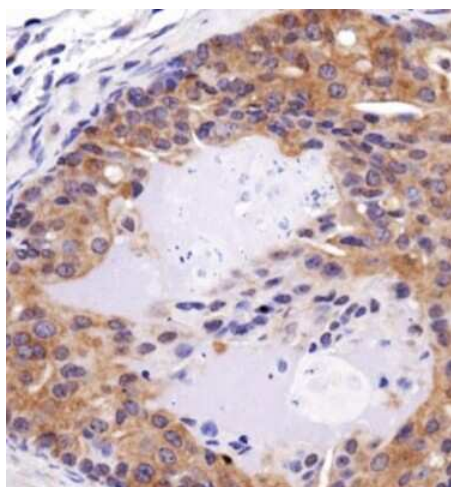
Product Type:	Primary Antibodies
Applications:	ICC/IF, IHC, WB
Recommended Dilution:	Knockout Validated, Western Blot, Immunocytochemistry/ Immunofluorescence: 1:100, Immunohistochemistry-Paraffin: 1:150, Immunohistochemistry: 1:150
Reactivity:	Human, Mouse
Host:	Rabbit
Clonality:	Polyclonal
Immunogen:	A synthetic peptide made to an C-terminal portion of the human FAT4 protein (between residues 4000-4500) [UniProt Q6V0I7]
Formulation:	PBS, 30% glycerol and 0.05% Sodium Azide
Concentration:	lot specific
Purification:	Affinity purified
Conjugation:	Unconjugated
Storage:	Store at -20°C as received.
Stability:	Stable for 12 months from date of receipt.
Gene Name:	FAT atypical cadherin 4
Database Link:	NP_078858 Entrez Gene 329628 Mouse Entrez Gene 79633 Human Q6V0I7
Synonyms:	CDHF14; CDHR11; FAT-J; FATJ; HKLLS2; NBLA00548; VMLDS2
Protein Families:	Transmembrane



[View online »](#)

Product images:

Immunocytochemistry/Immunofluorescence:
FAT4 Antibody TA309658 - Antibody was tested in
A431 cells with FITC (green). Nuclei were
counterstained with DAPI (blue).



Immunohistochemistry: FAT4 Antibody TA309658
- IHC analysis of FAT4 in mouse prostate cancer
using DAB with hematoxylin counterstain.