

Product datasheet for **TA309652**

FAM38A Rabbit Polyclonal Antibody

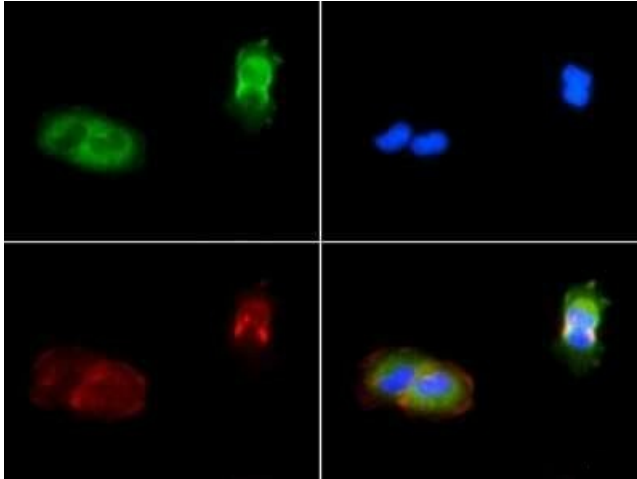
Product data:

Product Type:	Primary Antibodies
Applications:	FC, ICC/IF, IHC, WB
Recommended Dilution:	Flow Cytometry: 1-5 ug/ml, Western Blot: 2 ug/ml, Immunohistochemistry-Paraffin: 1:400, Immunohistochemistry: 1:400, Immunocytochemistry/ Immunofluorescence: 1:25
Reactivity:	Human, Mouse
Host:	Rabbit
Clonality:	Polyclonal
Immunogen:	A synthetic peptide made to an internal portion of the human PIEZO1 protein (between residues 950-1000) [UniProt Q92508]
Formulation:	PBS, 30% glycerol and 0.05% Sodium Azide
Concentration:	lot specific
Purification:	Affinity purified
Conjugation:	Unconjugated
Storage:	Store at -20°C as received.
Stability:	Stable for 12 months from date of receipt.
Database Link:	NP_055560 Entrez Gene 234839 Mouse
Synonyms:	family with sequence similarity 38; KIAA0233; member A; Mib
Protein Families:	Transmembrane

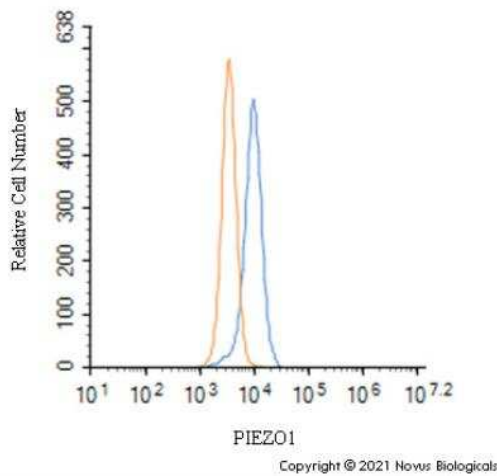


[View online »](#)

Product images:



Immunocytochemistry/Immunofluorescence: PIEZO1 Antibody TA309652 - PIEZO1 antibody was tested in A431 cells with FITC (green). Nuclei and alpha-tubulin were counterstained with DAPI (blue) and Dylight 550 (red).



Flow Cytometry: PIEZO1 Antibody TA309652 - An intracellular stain was performed on MCF7 cells with PIEZO1 Antibody TA309652 (blue) and a matched isotype control NBP2-24891 (orange). Cells were fixed with 4% PFA and then permeabilized with 0.1% saponin. Cells were incubated in an antibody dilution of 1.0 ug/mL for 30 minutes at room temperature, followed by Rabbit IgG (H+L) Cross-Adsorbed Secondary Antibody, Dylight 550 (SA5-10033, Thermo Fisher).



Immunohistochemistry: PIEZO1 Antibody TA309652 - Analysis of PIEZO1 in mouse epidermis using DAB with hematoxylin counterstain.