

Product datasheet for **TA309648**

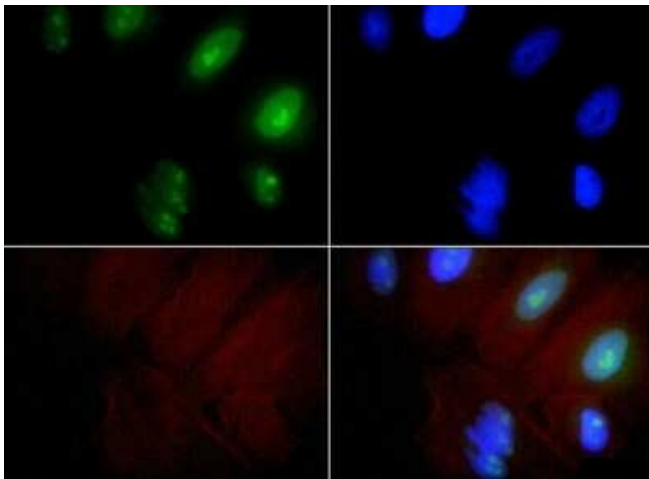
Exosome Component 9 (EXOSC9) Rabbit Polyclonal Antibody

Product data:

Product Type:	Primary Antibodies
Applications:	ChIP, ICC/IF, IHC, IP, Simple Western, WB
Recommended Dilution:	Immunoprecipitation, Immunohistochemistry: 1:50-1:100, Immunocytochemistry/Immunofluorescence: 1:100, Western Blot: 1:5000, Immunohistochemistry-Paraffin: 1:50-1:100, Simple Western: 1:1000, Chromatin Immunoprecipitation (ChIP)
Reactivity:	Human, Mouse
Host:	Rabbit
Clonality:	Polyclonal
Immunogen:	A genomic peptide made to an internal region of the human EXOSC9 protein (within residues 250-439). [Swiss-Prot Q06265]
Formulation:	PBS, 30% glycerol and 0.05% Sodium Azide
Concentration:	lot specific
Purification:	Affinity purified
Conjugation:	Unconjugated
Storage:	Store at -20°C as received.
Stability:	Stable for 12 months from date of receipt.
Gene Name:	exosome component 9
Database Link:	NP_005024 Entrez Gene 50911 Mouse Entrez Gene 5393 Human Q06265
Synonyms:	p5; p6; PM; PMSCL1; RRP45; Rrp45p; Scl-75
Protein Families:	Stem cell - Pluripotency
Protein Pathways:	RNA degradation



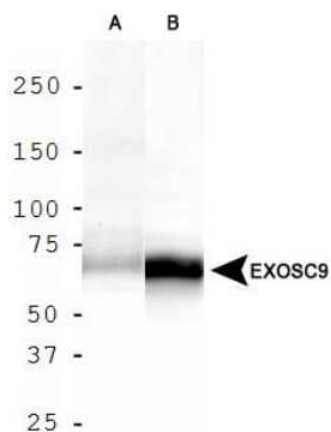
[View online »](#)

Product images:

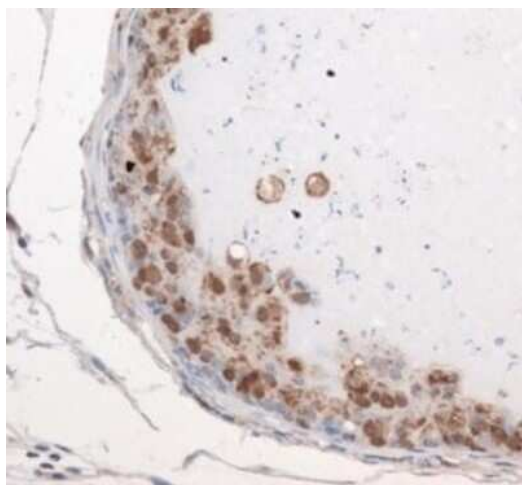
Immunocytochemistry/Immunofluorescence: Exosome Component 9 Antibody TA309648 - EXOSC9 antibody was tested at 1:100 in HeLa cells with FITC (green). Nuclei and actin were counterstained with Dapi (blue) and Phalloidin (red).



Simple Western: Exosome Component 9 Antibody TA309648 - Simple Western lane view shows a specific band for Exosome Component 9 in 0.5 mg/ml of HepG2 lysate. This experiment was performed under reducing conditions using the 12-230 kDa separation system.



Western Blot: Exosome Component 9 Antibody TA309648 - Analysis of EXOSC9 in A. HepG2 cell lysate and B. MCF7 cell lysate.



Immunohistochemistry: Exosome Component 9 Antibody TA309648 - Staining of EXOSC9 in mouse prostate.