

Product datasheet for **TA309647**

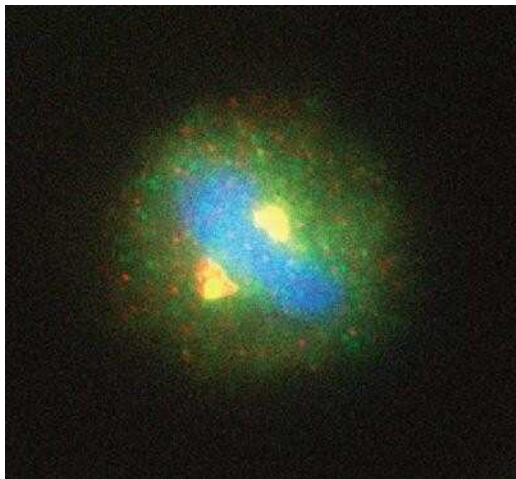
Separase (ESPL1) Mouse Monoclonal Antibody [Clone ID: XJ11-4D7]

Product data:

Product Type:	Primary Antibodies
Clone Name:	XJ11-4D7
Applications:	ICC/IF, WB
Recommended Dilution:	Western Blot, Immunocytochemistry/ Immunofluorescence: 1:100-1:1000
Reactivity:	Human
Host:	Mouse
Isotype:	IgG2a
Clonality:	Monoclonal
Immunogen:	Maltose-Binding Protein fusion of C-terminal fragment of human separase (amino acids 1866-1996)
Formulation:	0.1% Sodium Azide
Concentration:	lot specific
Purification:	Ascites
Conjugation:	Unconjugated
Storage:	Store at -20°C as received.
Stability:	Stable for 12 months from date of receipt.
Gene Name:	extra spindle pole bodies like 1, separase
Database Link:	NP_036423 Entrez Gene 9700 Human Q14674
Synonyms:	ESP1; SEPA
Protein Families:	Druggable Genome, Protease
Protein Pathways:	Cell cycle, Oocyte meiosis



[View online »](#)

Product images:

Immunocytochemistry/Immunofluorescence:
Separase Antibody (XJ11-4D7) TA309647 - Overlay [blue] of centrosomal staining in HeLa cells. Centrosomal staining of separase [yellow], using NB 100-330, and gamma tubulin [green] in mitotic-metaphase cells and nuclear staining of separase in pre-mitotic cells.