

Product datasheet for **TA309646**

Separase (ESPL1) Mouse Monoclonal Antibody [Clone ID: XJ11-1B12]

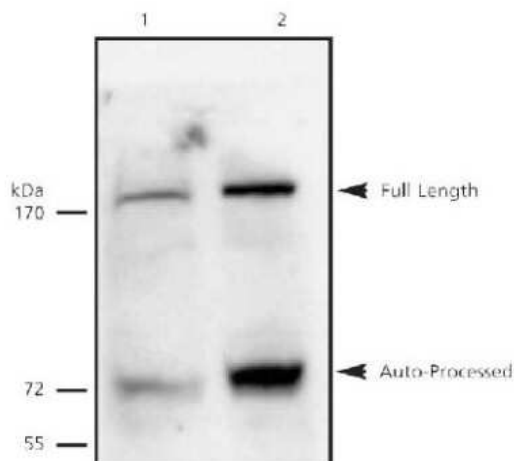
Product data:

Product Type:	Primary Antibodies
Clone Name:	XJ11-1B12
Applications:	WB
Recommended Dilution:	Western Blot: 1:500
Reactivity:	Human
Host:	Mouse
Isotype:	IgG1, kappa
Clonality:	Monoclonal
Immunogen:	Maltose-Binding Protein fusion of a C-terminal fragment of human separase (residues 1866-1996).
Formulation:	PBS and 0.1% Sodium Azide
Concentration:	lot specific
Purification:	Protein G purified
Conjugation:	Unconjugated
Storage:	Store at -20°C as received.
Stability:	Stable for 12 months from date of receipt.
Gene Name:	extra spindle pole bodies like 1, separase
Database Link:	NP_036423 Entrez Gene 9700 Human Q14674
Synonyms:	ESP1; SEPA
Protein Families:	Druggable Genome, Protease
Protein Pathways:	Cell cycle, Oocyte meiosis



[View online »](#)

Product images:



Western Blot: Separase Antibody (XJ11-1B12) TA309646 - Separase detected in 5C6 cell lysates using NB 100-439. Lane 1: Non-induced lysate. Lane 2: Lysate induced with ponasterone.