

Product datasheet for **TA309645**

Separase (ESPL1) Rabbit Polyclonal Antibody

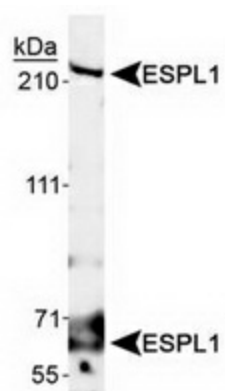
Product data:

Product Type:	Primary Antibodies
Applications:	WB
Recommended Dilution:	WB
Reactivity:	Human
Host:	Rabbit
Clonality:	Polyclonal
Immunogen:	Synthetic peptide made to an internal portion of the human protein (within residues 1400-1500). [Swiss-Prot# Q14674]
Formulation:	Tris-citrate/phosphate, pH 7-8 and 0.1% Sodium Azide
Concentration:	lot specific
Purification:	Immunogen affinity purified
Conjugation:	Unconjugated
Storage:	Store at -20°C as received.
Stability:	Stable for 12 months from date of receipt.
Gene Name:	extra spindle pole bodies like 1, separase
Database Link:	NP_036423 Entrez Gene 9700 Human Q14674
Synonyms:	ESP1; SEPA
Protein Families:	Druggable Genome, Protease
Protein Pathways:	Cell cycle, Oocyte meiosis



[View online »](#)

Product images:



Detection of ESPL1 isoforms 1 and 2 in A431 whole cell lysates using anti-ESPL1.